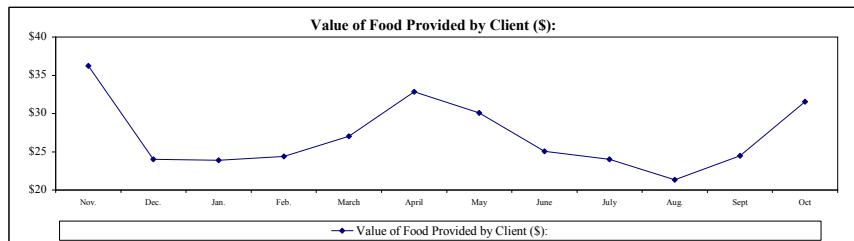
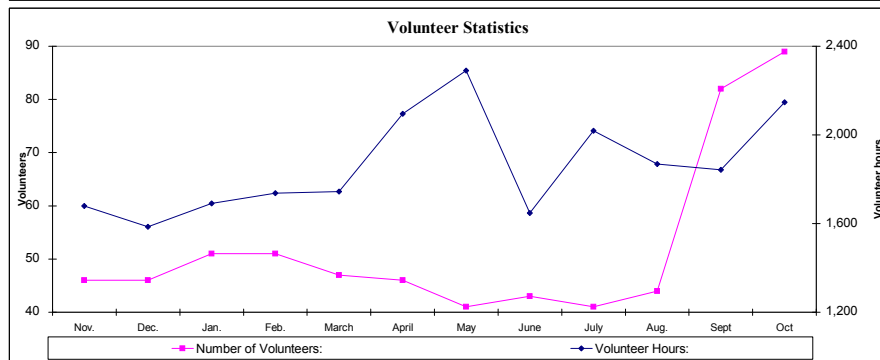
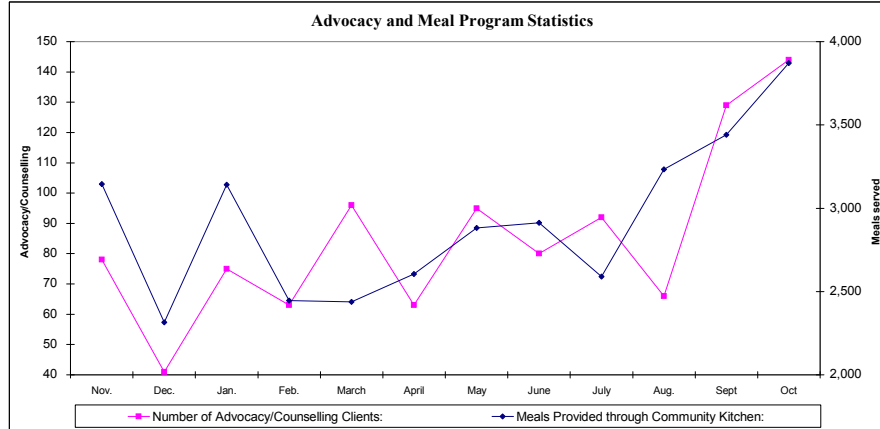
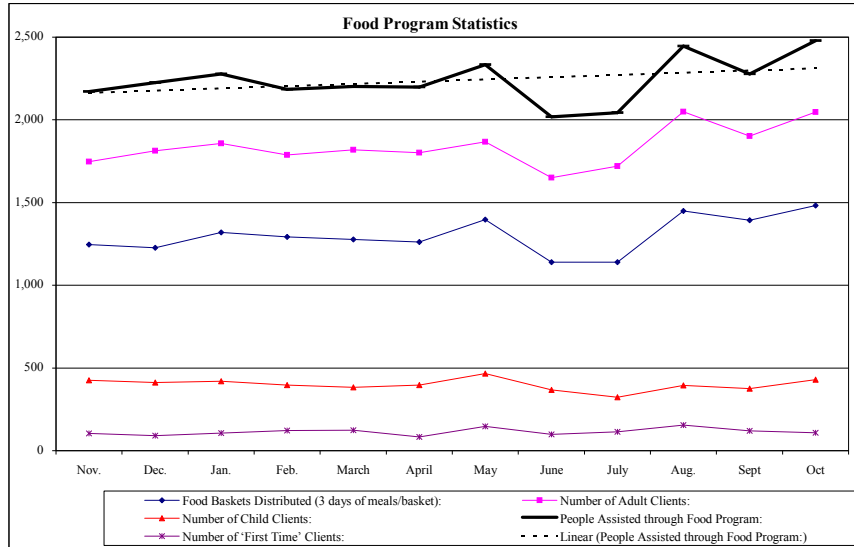


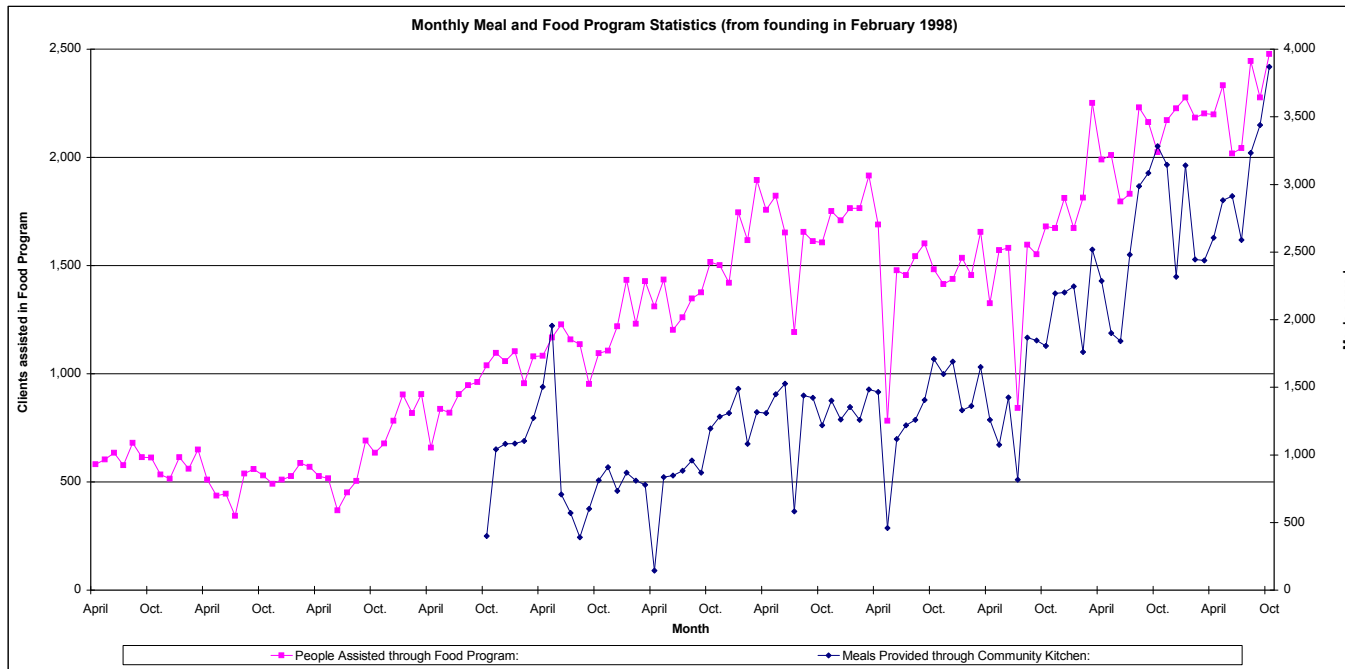
Fort York Food Bank Monthly Performance Report (FYFB)

Twelve Months ending October 31, 2008	2007										2008		12 Month Rolling Figures		
	Nov.	Dec.	Jan.	Feb.	March	April	May	June	July	Aug.	Sept	Oct	Current Total	Current Average	Ratios
Food Baskets Distributed (3 days of meals/basket):	1,246	1,227	1,319	1,292	1,278	1,262	1,398	1,139	1,140	1,450	1,393	1,482	15,626	1,302	
Meals Provided through Food Program:	19,548	18,150	20,493	19,656	19,818	19,782	20,997	18,162	18,387	22,005	20,493	22,302	239,793	19,983	15.35
Number of Adult Clients:	1,747	1,813	1,857	1,788	1,819	1,802	1,867	1,651	1,720	2,050	1,902	2,048	22,064	1,839	82%
Number of Child Clients:	425	413	420	396	383	396	466	367	323	395	375	430	4,789	399	18%
People Assisted through Food Program:	2,172	2,226	2,277	2,184	2,202	2,198	2,333	2,018	2,043	2,445	2,277	2,478	26,853	2,238	100%
Number of 'First Time' Clients:	105	90	106	122	124	83	147	99	115	155	120	109	1,375	115	5%
Number of Volunteers:	46	46	51	51	47	46	41	43	41	44	82	89	627	52	
Volunteer Hours:	1,680	1,585	1,691	1,737	1,745	2,095	2,290	1,647	2,019	1,869	1,843	2,148	22,349	1,862	35.64
Number of Advocacy/Counselling Clients:	78	41	75	63	96	63	95	80	92	66	129	144	1,022	85	7%
Meals Provided through Community Kitchen:	3,146	2,316	3,142	2,446	2,438	2,605	2,882	2,913	2,589	3,233	3,440	3,871	35,021	2,918	13%
Number of Donors:	34	69	23	19	30	24	42	29	20	19	21	40	370	31	
Cash Donations/Funding Received (\$):	\$20,278	\$15,420	\$10,115	\$846	\$10,145	\$4,989	\$6,941	\$13,959	\$4,193	\$212	\$665	\$4,037	\$91,800	\$7,650	\$3
Food Donations Received (\$ Value):	\$78,734	\$53,477	\$54,388	\$53,261	\$59,475	\$72,194	\$70,152	\$50,559	\$49,060	\$52,198	\$55,744	\$78,217	\$727,459	\$60,622	\$27
Value of Food Provided by Client (\$):	\$36	\$24	\$24	\$24	\$27	\$33	\$30	\$25	\$24	\$21	\$24	\$32		\$27	
Other In-Kind Donations Received (\$ Value):	\$2,222	\$4,647	\$2,385	\$1,544	\$1,565	\$3,826	\$9,351	\$1,870	\$1,810	\$1,731	\$1,811	\$4,066	\$36,828	\$3,069	\$1



Fort York Food Bank Monthly Performance Report (FYFB)

Twelve Months ending October 31, 2008	Current Month				Trailing 12 months				From Founding
	2006	2007	2008	Change	2006	2007	2008	Change	
Food Baskets Distributed (3 days of meals/basket):	920	1,149	1,482	61%	9,808	13,267	15,626	59%	91,631
Meals Provided through Food Program:	15,120	18,216	22,302	48%	158,805	209,412	239,793	51%	1,473,684
Number of Adult Clients:	1,283	1,646	2,048	60%	13,408	18,260	22,064	65%	123,564
Number of Child Clients:	397	378	430	8%	4,237	5,008	4,789	13%	38,770
People Assisted through Food Program:	1,680	2,024	2,478	48%	17,645	23,268	26,853	52%	162,334
Number of 'First Time' Clients:	83	80	109	31%	1,060	1,451	1,375	30%	13,875
Number of Volunteers:	45	48	89	98%	491	622	627	28%	4,571
Volunteer Hours:	1,428	1,328	2,148	50%	13,028	17,825	22,349	72%	126,086
Number of Advocacy/Counselling Clients:	214	101	144	-33%	1,600	1,356	1,022	-36%	13,085
Meals Provided through Community Kitchen:	1,806	3,284	3,871	114%	17,723	28,784	35,021	98%	134,698
Number of Donors:	36	40	40	11%	446	394	370	-17%	2,243
Cash Donations/Funding Received (\$):	\$1,785	\$6,978	\$4,037	126%	\$66,292	\$116,657	\$91,800	38%	\$940,223
Food Donations Received (\$ Value):	\$50,642	\$68,023	\$78,217	54%	\$499,990	\$636,236	\$727,459	45%	\$3,800,839
Value of Food Provided by Client (\$):	\$30	\$34	\$32	5%	\$28	\$27	\$27	-4%	\$23
Other In-Kind Donations Received (\$ Value):	\$1,966	\$1,841	\$4,066	107%	\$50,990	\$35,908	\$36,828	-28%	\$254,044



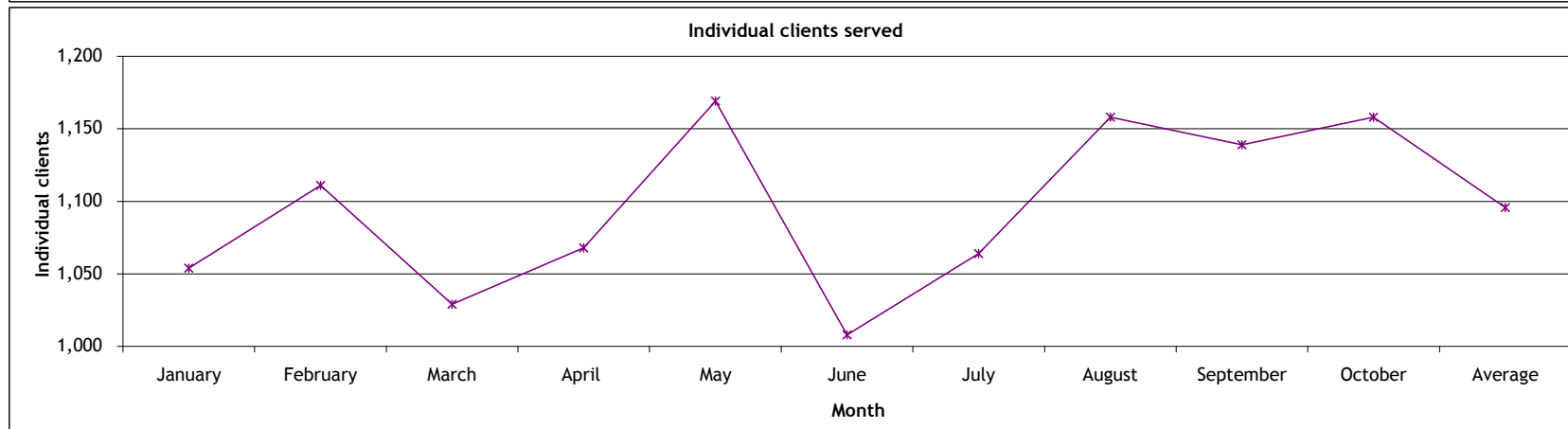
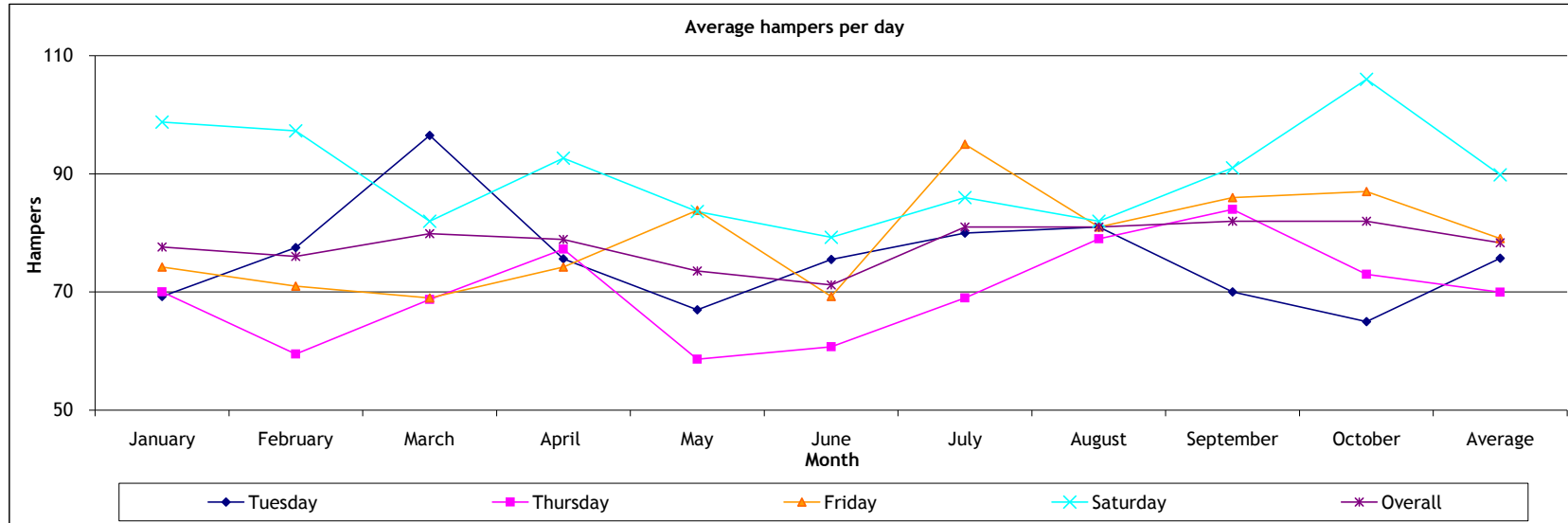
FORT YORK FOOD BANK
Daily operations report
Reporting for: October 2008

DATE	Drop in Centre Meals Served	Food program				Total clients	New clients
		Hampers	Adults	Children			
1/Oct/08	151						
2/Oct/08	195	62	76	5	81	8	
3/Oct/08	186	72	89	31	120	2	
4/Oct/08	276	103	134	22	156	3	
5/Oct/08							
6/Oct/08							
7/Oct/08	125	75	137	31	168	7	
8/Oct/08	162						
9/Oct/08	150	72	97	18	115	4	
10/Oct/08	139	91	140	23	163	4	
11/Oct/08	221	105	134	17	151	2	
12/Oct/08							
13/Oct/08							
14/Oct/08	159	52	60	7	67	2	
15/Oct/08	112						
16/Oct/08	135	75	97	16	113	4	
17/Oct/08	145	97	155	52	207	11	
18/Oct/08	325	117	157	22	179	12	
19/Oct/08							
20/Oct/08							
21/Oct/08	132	81	139	31	170	13	
22/Oct/08	96						
23/Oct/08	195	102	123	18	141	8	
24/Oct/08	213	102	117	39	156	10	
25/Oct/08	267	98	127	29	156	10	
26/Oct/08							
27/Oct/08							
28/Oct/08	145	53	106	16	122	3	
29/Oct/08	97						
30/Oct/08	110	53	66	8	74	5	
31/Oct/08	135	72	94	45	139	1	
Totals	3,871	1,482	2,048	430	2,478	109	
Individual clients			966	192	1,158		
Daily Averages							
Tuesday	140	65	111	21	132	6	
Wednesday	124	n/a	n/a	n/a	n/a	n/a	
Thursday	157	73	92	13	105	6	
Friday	164	87	119	38	157	6	
Saturday	272	106	138	23	161	7	
Overall	168	82	114	24	138	6	

**Fort York Food Bank (FYFB)
2008 Food Program Averages**

Daily hampers	January	February	March	April	May	June	July	August	September	October	Average
Tuesday	69	78	97	76	67	76	80	81	70	65	76
Thursday	70	60	69	77	59	61	69	79	84	73	70
Friday	74	71	69	74	84	69	95	81	86	87	79
Saturday	99	97	82	93	84	79	86	82	91	106	90
Overall	78	76	80	79	74	71	81	81	82	82	78

Individual clients served	January	February	March	April	May	June	July	August	September	October	Average
Individual clients served	1,054	1,111	1,029	1,068	1,169	1,008	1,064	1,158	1,139	1,158	1,096



Fort York Food Bank (FYFB)

Advocacy/Counselling Operations Report

Twelve Months ending October 31, 2008	2007												2008		Past 12 months	
	Nov	Dec	Jan	Feb	March	April	May	June	July	Aug	Sept	Oct	Total	Average		
Outreach Meetings	0	0	2	0	2	0	1	6	6	6	0	3	26	2		
Referrals to Partners	8	4	6	9	17	3	9	6	8	6	19	11	106	9		
Community Partners	9	9	9	11	11	11	11	11	11	11	13	15	132	11		
Community Partner Retention	100%	100%	100%	100%	100%	100%	100%	100%	100%	100%	100%	100%	-	100%		
Counselling Service Users	78	41	75	63	96	63	95	80	92	66	129	144	1,022	85		
3rd Party Intervention - Meetings	2	0	2	1	2	1	3	8	9	5	6	2	41	3		
3rd Party Intervention - Letters/Applications	6	4	6	8	23	18	3	6	3	7	14	7	105	9		
Cross-Cultural Language Services	17	15	17	20	16	16	40	23	30	19	39	42	294	25		
Languages Supported	6	6	6	6	6	6	6	6	6	6	6	6	72	6		
Workshop Partners	7	7	8	7	7	7	7	7	7	7	8	9	88	7		
Workshops Delivered	0	0	2	4	1	2	2	1	1	1	3	2	19	2		
Workshop Attendance	0	0	16	10	12	25	23	8	8	9	45	11	167	14		
Counsellors	10	10	10	10	11	11	10	11	9	9	10	10	121	10		
Counsellor Retention	100%	100%	100%	100%	100%	100%	91%	100%	82%	100%	100%	100%	-	98%		
Senior Volunteers	7	7	7	6	7	7	7	7	7	9	9	10	90	8		
Senior Volunteer Hours	439	333	390	402	320	400	502	390	474	536	489	567	5,240	437		
New General Volunteers - Trained	5	2	6	4	4	5	6	2	1	4	2	4	45	4		
Volunteer Hours	272	260	368	426	347	383	465	449	415	345	442	495	4,667	389		

Case BreakDown

Housing	6	2	9	5	2	0	9	3	9	7	8	12	12%
Legal clinic/ID	7	5	8	4	2	2	4	6	2	5	10	6	10%
OW/ODSP/EI	20	14	22	21	10	13	25	24	30	19	22	44	43%
Training/Employment	14	0	3	2	13	7	6	7	3	2	5	3	11%
Financial (Tax Returns, CTB, etc.)	0	0	3	1	12	12	1	3	2	4	3	2	7%
Health	1	0	0	1	4	3	2	7	3	2	7	6	6%
Immigration	1	1	3	0	1	2	1	1	1	1	1	2	2%
Other	3	4	1	1	6	1	3	4	1	7	10	14	9%