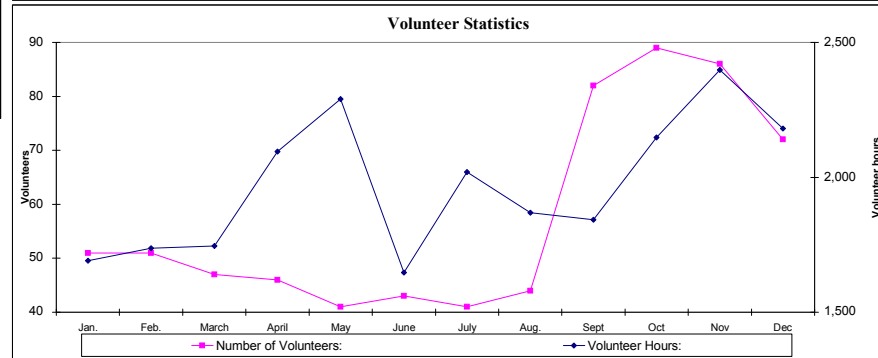
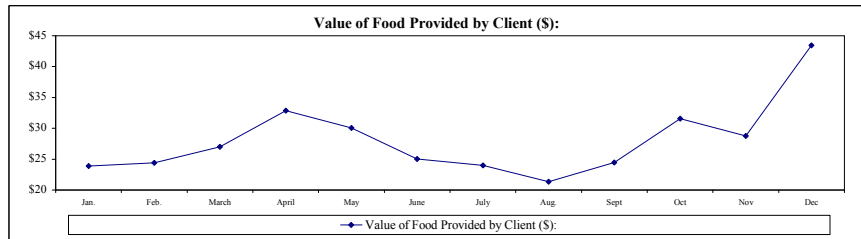
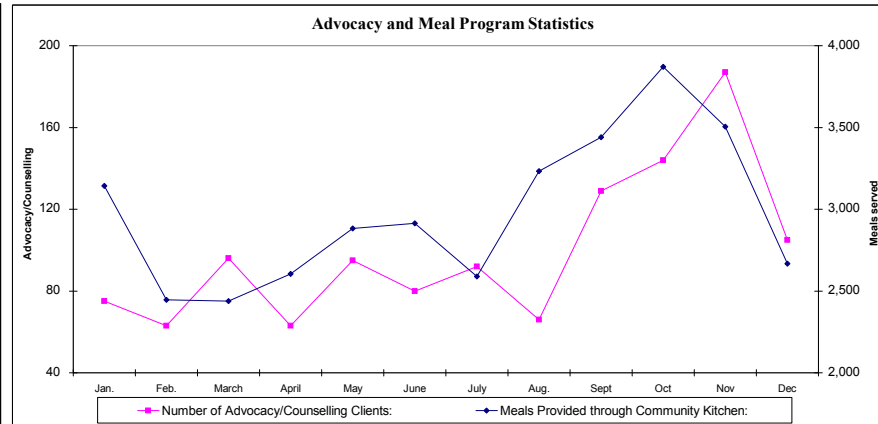
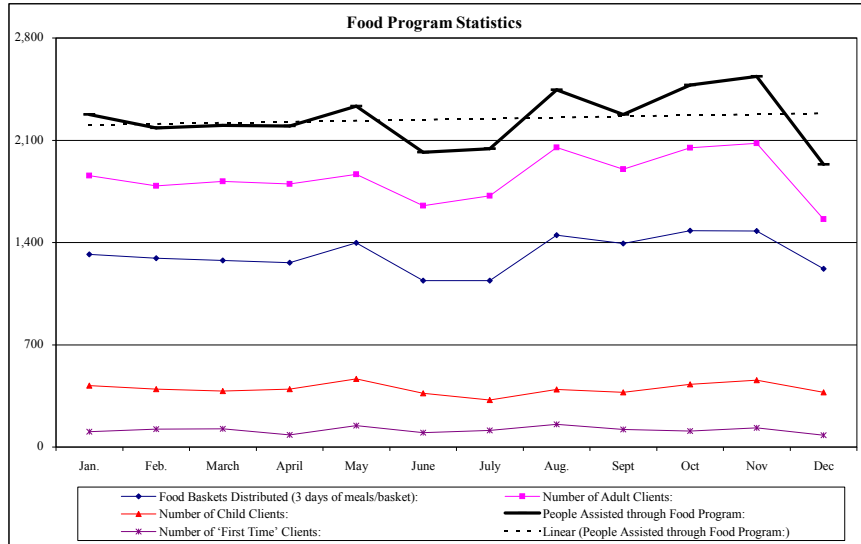


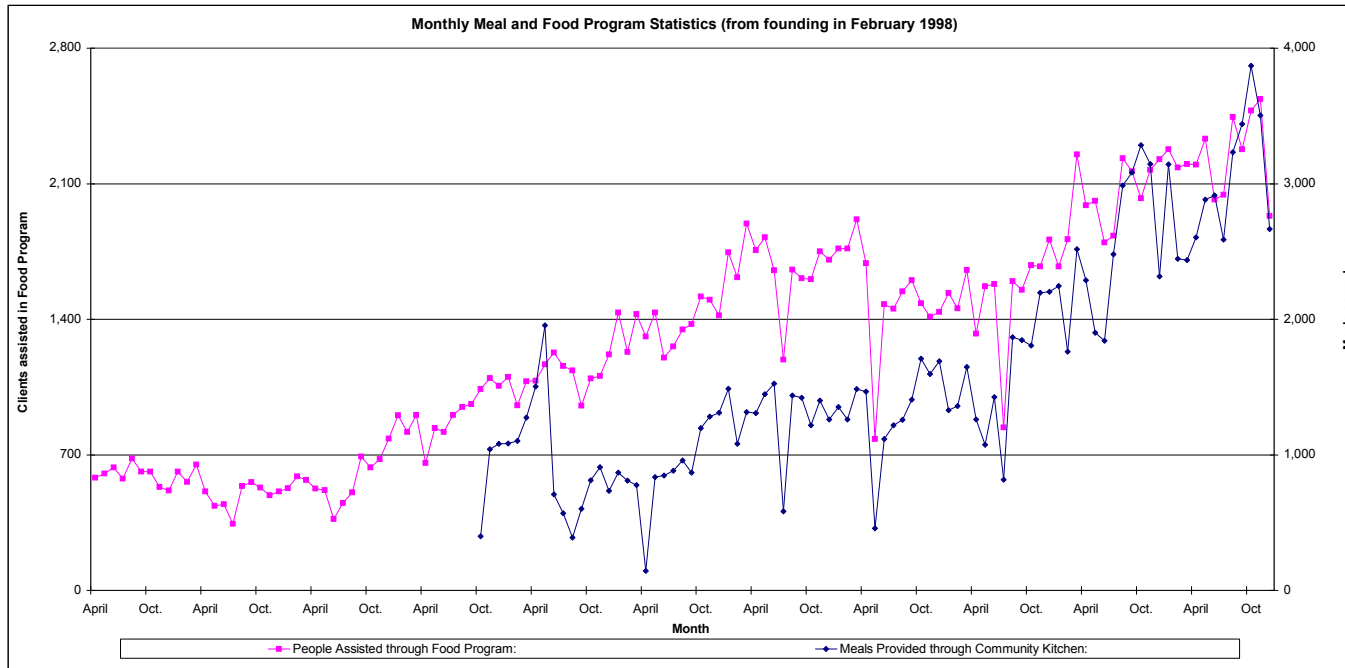
## Fort York Food Bank Monthly Performance Report (FYFB)

Twelve Months ending December 31, 2008													2008		12 Month Rolling Figures	
	Jan.	Feb.	March	April	May	June	July	Aug.	Sept	Oct	Nov	Dec	Current Total	Current Average	Ratios	
<b>Food Baskets Distributed (3 days of meals/basket):</b>	1,319	1,292	1,278	1,262	1,398	1,139	1,140	1,450	1,393	1,482	1,479	1,220	15,852	1,321		
<b>Meals Provided through Food Program:</b>	20,493	19,656	19,818	19,782	20,997	18,162	18,387	22,005	20,493	22,302	22,833	17,406	242,334	20,195	15.29	
<b>Number of Adult Clients:</b>	1,857	1,788	1,819	1,802	1,867	1,651	1,720	2,050	1,902	2,048	2,079	1,560	22,143	1,845	82%	
<b>Number of Child Clients:</b>	420	396	383	396	466	367	323	395	375	430	458	374	4,783	399	18%	
<b>People Assisted through Food Program:</b>	2,277	2,184	2,202	2,198	2,333	2,018	2,043	2,445	2,277	2,478	2,537	1,934	26,926	2,244	100%	
<b>Number of 'First Time' Clients:</b>	106	122	124	83	147	99	115	155	120	109	131	82	1,393	116	5%	
<b>Number of Volunteers:</b>	51	51	47	46	41	43	41	44	82	89	86	72	693	58		
<b>Volunteer Hours:</b>	1,691	1,737	1,745	2,095	2,290	1,647	2,019	1,869	1,843	2,148	2,398	2,181	23,663	1,972	34.15	
<b>Number of Advocacy/Counselling Clients:</b>	75	63	96	63	95	80	92	66	129	144	187	105	1,195	100	8%	
<b>Meals Provided through Community Kitchen:</b>	3,142	2,446	2,438	2,605	2,882	2,913	2,589	3,233	3,440	3,871	3,505	2,667	35,731	2,978	13%	
<b>Number of Donors:</b>	23	19	30	24	42	29	20	19	21	40	45	78	390	33		
<b>Cash Donations/Funding Received (\$):</b>	\$10,115	\$846	\$10,145	\$4,989	\$6,941	\$13,959	\$4,193	\$212	\$665	\$4,037	\$12,072	\$32,424	\$100,597	\$8,383	\$4	
<b>Food Donations Received (\$ Value):</b>	\$54,388	\$53,261	\$59,475	\$72,194	\$70,152	\$50,559	\$49,060	\$52,198	\$55,744	\$78,217	\$72,990	\$83,998	\$752,236	\$62,686	\$28	
<b>Value of Food Provided by Client (\$):</b>	\$24	\$24	\$27	\$33	\$30	\$25	\$24	\$21	\$24	\$32	\$29	\$43		\$28		
<b>Other In-Kind Donations Received (\$ Value):</b>	\$2,385	\$1,544	\$1,565	\$3,826	\$9,351	\$1,870	\$1,810	\$1,731	\$1,811	\$4,066	\$3,013	\$1,190	\$34,162	\$2,847	\$1	



## Fort York Food Bank Monthly Performance Report (FYFB)

Twelve Months ending December 31, 2008	Current Month				Trailing 12 months				From Founding
	2006	2007	2008	Change	2006	2007	2008	Change	
Food Baskets Distributed (3 days of meals/basket):	1,032	1,227	1,220	18%	10,237	13,757	15,852	55%	94,330
Meals Provided through Food Program:	16,308	18,150	17,406	7%	164,502	215,745	242,334	47%	1,513,923
Number of Adult Clients:	1,407	1,813	1,560	11%	13,980	19,128	22,143	58%	127,203
Number of Child Clients:	405	413	374	-8%	4,298	5,053	4,783	11%	39,602
People Assisted through Food Program:	1,812	2,226	1,934	7%	18,278	24,181	26,926	47%	166,805
Number of 'First Time' Clients:	108	90	82	-24%	1,131	1,384	1,393	23%	14,088
Number of Volunteers:	46	46	72	57%	507	624	693	37%	4,729
Volunteer Hours:	1,499	1,585	2,181	45%	13,760	18,210	23,663	72%	130,665
Number of Advocacy/Counselling Clients:	30	41	105	250%	1,497	1,322	1,195	-20%	13,377
Meals Provided through Community Kitchen:	2,202	2,316	2,667	21%	18,832	29,849	35,731	90%	140,870
Number of Donors:	62	69	78	26%	448	404	390	-13%	2,366
Cash Donations/Funding Received (\$):	\$17,836	\$15,420	\$32,424	82%	\$83,888	\$123,077	\$100,597	20%	\$984,719
Food Donations Received (\$ Value):	\$45,874	\$53,477	\$83,998	83%	\$496,561	\$680,986	\$752,236	51%	\$3,957,827
Value of Food Provided by Client (\$):	\$25	\$24	\$43	72%	\$27	\$28	\$28	3%	\$24
Other In-Kind Donations Received (\$ Value):	\$6,009	\$4,647	\$1,190	-80%	\$56,710	\$31,393	\$34,162	-40%	\$258,247



**FORT YORK FOOD BANK**  
**Daily operations report**  
**Reporting for: December 2008**

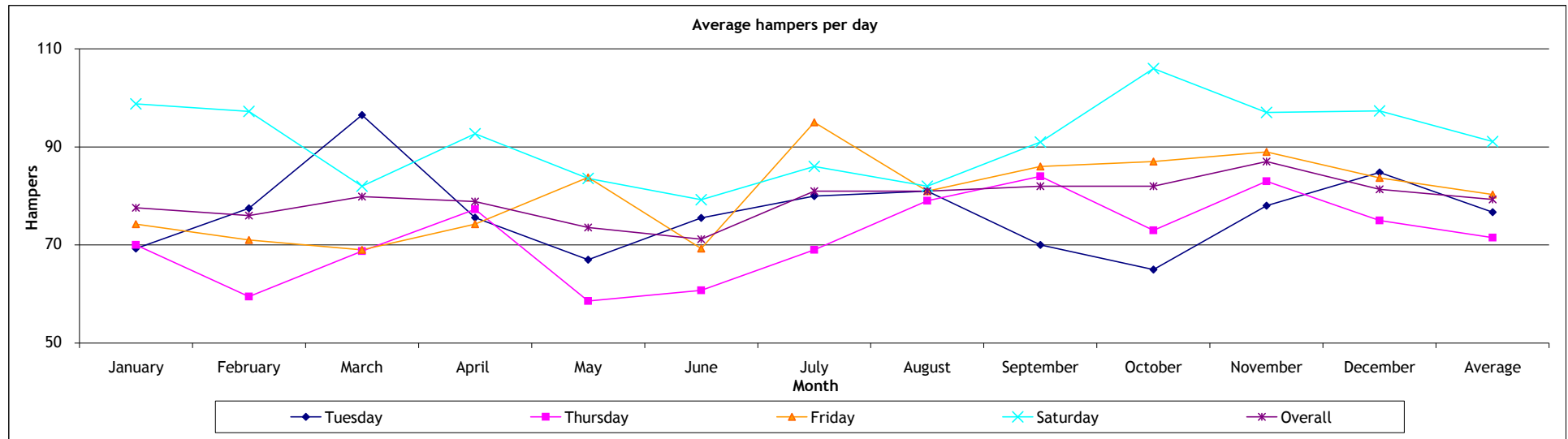
DATE	Drop in Centre Meals Served	Food program			Total clients	New clients
		Hampers	Adults	Children		
1/Dec/08						
2/Dec/08	148	46	54	8	62	3
3/Dec/08	92					
4/Dec/08	136	72	85	16	101	8
5/Dec/08	159	95	117	40	157	17
6/Dec/08	186	92	124	28	152	5
7/Dec/08						
8/Dec/08						
9/Dec/08	168	73	94	20	114	5
10/Dec/08	89					
11/Dec/08	157	84	139	18	157	3
12/Dec/08	181	109	135	56	191	4
13/Dec/08	273	102	133	30	163	1
14/Dec/08						
15/Dec/08						
16/Dec/08	147	115	136	39	175	4
17/Dec/08	125	28	35	6	41	6
18/Dec/08	177	69	83	15	98	8
19/Dec/08	151	47	59	16	75	1
20/Dec/08	187	98	122	19	141	9
21/Dec/08						
22/Dec/08						
23/Dec/08	156	103	131	44	175	6
24/Dec/08						
25/Dec/08						
26/Dec/08						
27/Dec/08						
28/Dec/08						
29/Dec/08						
30/Dec/08	135	87	113	19	132	2
31/Dec/08						
<b>Totals</b>	<b>2,667</b>	<b>1,220</b>	<b>1,560</b>	<b>374</b>	<b>1,934</b>	<b>82</b>
<b>Individual clients</b>			<b>905</b>	<b>192</b>	<b>1,097</b>	
<b>Daily Averages</b>						
Tuesday	151	85	106	26	132	4
Wednesday	102	28	35	6	41	6
Thursday	157	75	102	16	119	6
Friday	164	84	104	37	141	7
Saturday	215	97	126	26	152	5
<b>Overall</b>	<b>157</b>	<b>81</b>	<b>104</b>	<b>25</b>	<b>129</b>	<b>5</b>

**Fort York Food Bank (FYFB)  
2008 Food Program Averages**

Daily hampers	January	February	March	April	May	June	July	August	September	October	November	December	Average
Tuesday	69	78	97	76	67	76	80	81	70	65	78	85	77
Wednesday													28
Thursday	70	60	69	77	59	61	69	79	84	73	83	75	71
Friday	74	71	69	74	84	69	95	81	86	87	89	84	80
Saturday	99	97	82	93	84	79	86	82	91	106	97	97	91
<b>Overall</b>	<b>78</b>	<b>76</b>	<b>80</b>	<b>79</b>	<b>74</b>	<b>71</b>	<b>81</b>	<b>81</b>	<b>82</b>	<b>82</b>	<b>87</b>	<b>81</b>	<b>79</b>

Individual clients served	January	February	March	April	May	June	July	August	September	October	November	December	Average
	1,054	1,111	1,029	1,068	1,169	1,008	1,064	1,158	1,139	1,158	1,262	1,097	1,110



# Fort York Food Bank (FYFB)

## Advocacy/Counselling Operations Report

Twelve Months ending December 31, 2008	2008												Past 12 months	
	Jan	Feb	March	April	May	June	July	Aug	Sept	Oct	Nov	Dec	Total	Average
Outreach Meetings	2	0	2	0	1	6	6	6	0	3	4	2	32	3
Referrals to Partners	6	9	17	3	9	6	8	6	19	11	12	10	116	10
Community Partners	9	11	11	11	11	11	11	11	13	15	15	15	144	12
Community Partner Retention	100%	100%	100%	100%	100%	100%	100%	100%	100%	100%	100%	100%	-	100%
Counselling Service Users	75	63	96	63	95	80	92	66	129	144	187	105	1,195	100
3rd Party Intervention - Meetings	2	1	2	1	3	8	9	5	6	2	4	2	45	4
3rd Party Intervention - Letters/Applications	6	8	23	18	3	6	3	7	14	7	10	7	112	9
Cross-Cultural Language Services	17	20	16	16	40	23	30	19	39	42	38	34	334	28
Languages Supported	6	6	6	6	6	6	6	6	6	6	6	6	72	6
Workshop Partners	8	7	7	7	7	7	7	7	8	9	9	9	92	8
Workshops Delivered	2	4	1	2	2	1	1	1	3	2	4	4	27	2
Workshop Attendance	16	10	12	25	23	8	8	9	45	11	24	36	227	19
Counsellors	10	10	11	11	10	11	9	9	10	10	12	13	126	11
Counsellor Retention	100%	100%	100%	100%	91%	100%	82%	100%	100%	100%	100%	100%	-	98%
Senior Volunteers	7	6	7	7	7	7	7	9	9	10	9	9	94	8
Senior Volunteer Hours	390	402	320	400	502	390	474	536	489	567	508	470	5,447	454
New General Volunteers - Trained	6	4	4	5	6	2	1	4	2	4	5	2	45	4
Volunteer Hours	368	426	347	383	465	449	415	345	442	495	562	364	5,061	422

### Case BreakDown

Housing	9	5	2	0	9	3	9	7	8	12	11	6	12%
Legal clinic/ID	8	4	2	2	4	6	2	5	10	6	8	3	9%
OW/ODSP/EI	22	21	10	13	25	24	30	19	22	44	47	23	44%
Training/Employment	3	2	13	7	6	7	3	2	5	3	4	0	8%
Financial (Tax Returns, CTB, etc.)	3	1	12	12	1	3	2	4	3	2	2	1	7%
Health	0	1	4	3	2	7	3	2	7	6	7	5	7%
Immigration	3	0	1	2	1	1	1	1	1	2	4	1	3%
Other	1	1	6	1	3	4	1	7	10	14	16	4	10%