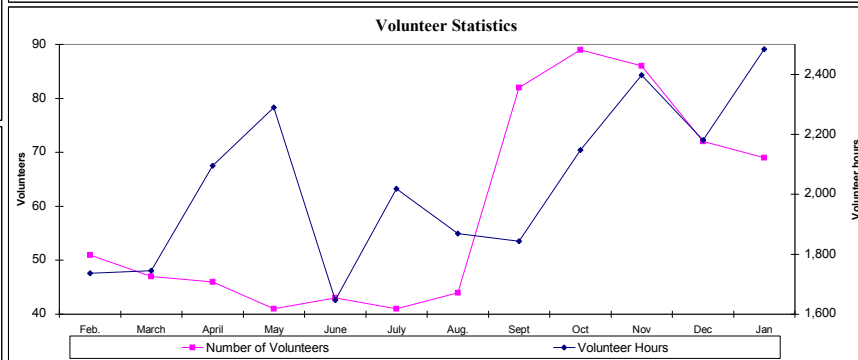
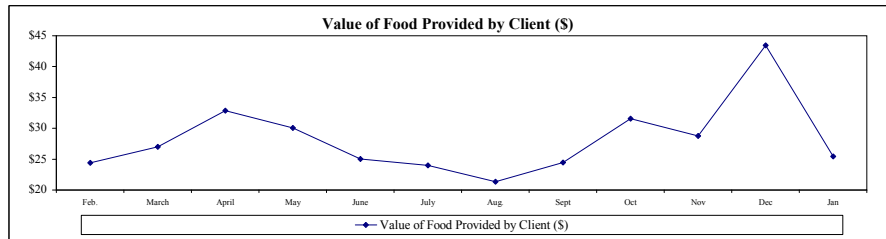
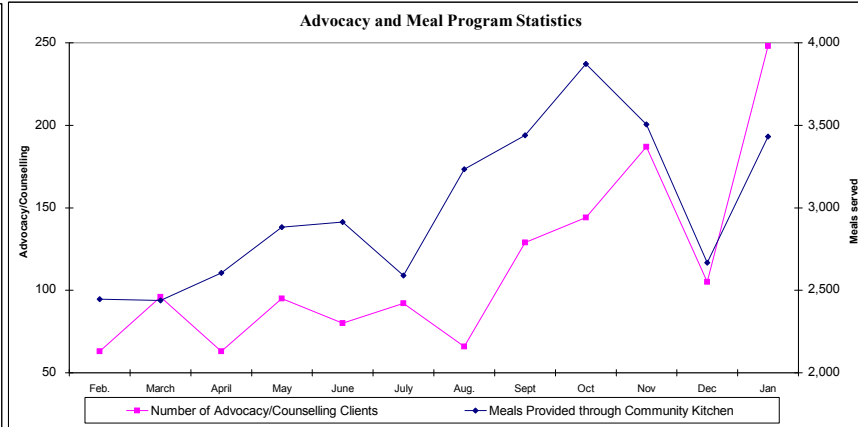
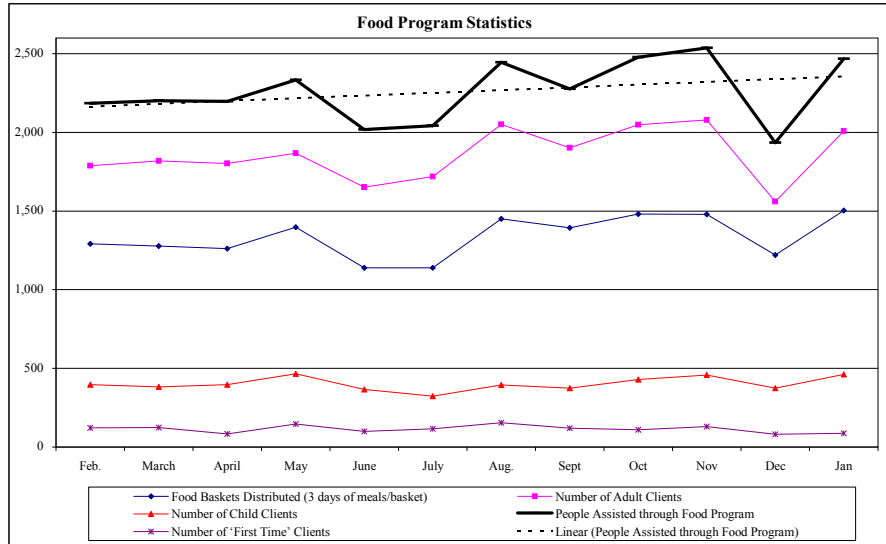


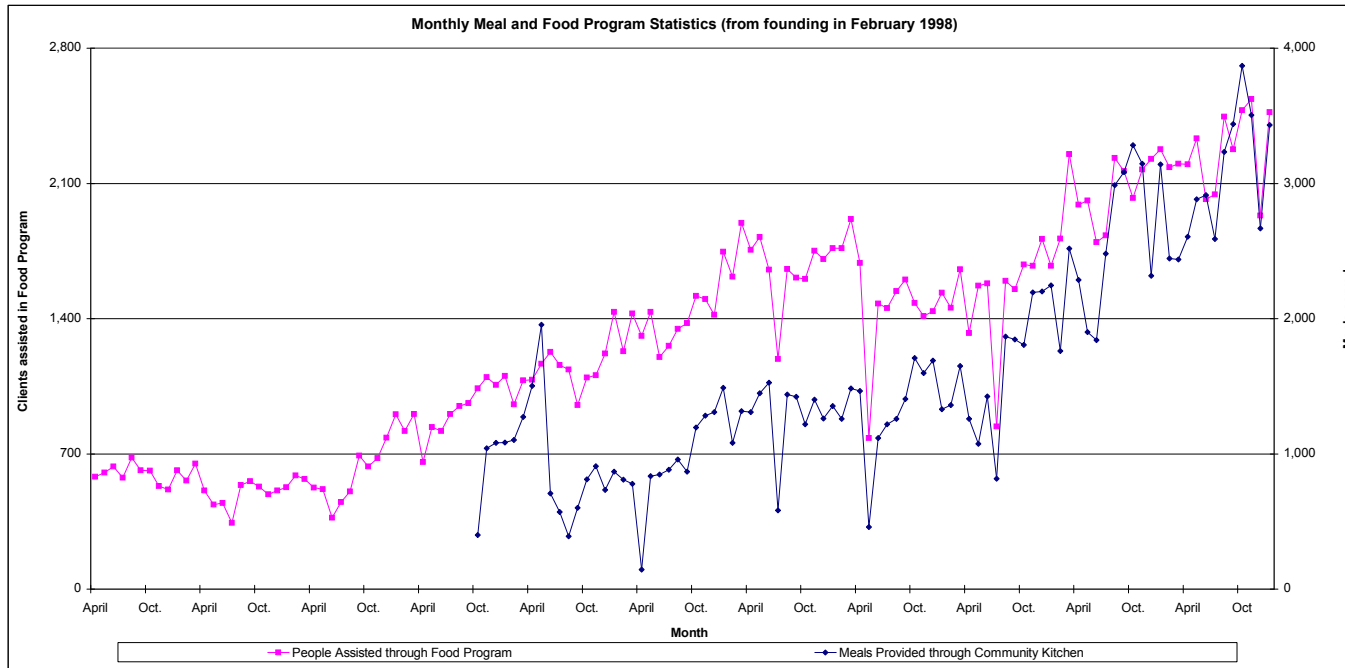
Fort York Food Bank Monthly Performance Report (FYFB)

Twelve Months ending January 31, 2009	2008												2009		12 Month Rolling Figures		
	Feb.	March	April	May	June	July	Aug.	Sept	Oct	Nov	Dec	Jan	Current Total	Current Average	Ratios		
Food Baskets Distributed (3 days of meals/basket)	1,292	1,278	1,262	1,398	1,139	1,140	1,450	1,393	1,482	1,479	1,220	1,504	16,037	1,336			
Meals Provided through Food Program	19,656	19,818	19,782	20,997	18,162	18,387	22,005	20,493	22,302	22,833	17,406	22,212	244,053	20,338	15.22		
Number of Adult Clients	1,788	1,819	1,802	1,867	1,651	1,720	2,050	1,902	2,048	2,079	1,560	2,007	22,293	1,858	82%		
Number of Child Clients	396	383	396	466	367	323	395	375	430	458	374	461	4,824	402	18%		
People Assisted through Food Program	2,184	2,202	2,198	2,333	2,018	2,043	2,445	2,277	2,478	2,537	1,934	2,468	27,117	2,260	100%		
Number of 'First Time' Clients	122	124	83	147	99	115	155	120	109	131	82	88	1,375	115	5%		
Number of Volunteers	51	47	46	41	43	41	44	82	89	86	72	69	711	59			
Volunteer Hours	1,737	1,745	2,095	2,290	1,647	2,019	1,869	1,843	2,148	2,398	2,181	2,484	24,456	2,038	34.40		
Number of Advocacy/Counselling Clients	63	96	63	95	80	92	66	129	144	187	105	248	1,368	114	9%		
Meals Provided through Community Kitchen	2,446	2,438	2,605	2,882	2,913	2,589	3,233	3,440	3,871	3,505	2,667	3,431	36,020	3,002	13%		
Number of Donors	19	30	24	42	29	20	19	21	40	45	78	33	400	33			
Cash Donations/Funding Received (\$)	\$846	\$10,145	\$4,989	\$6,941	\$13,959	\$4,193	\$212	\$665	\$4,037	\$12,072	\$32,424	\$8,458	\$98,940	\$8,245	\$4		
Food Donations Received (\$ Value)	\$53,261	\$59,475	\$72,194	\$70,152	\$50,559	\$49,060	\$52,198	\$55,744	\$78,217	\$72,990	\$83,998	\$62,854	\$760,702	\$63,392	\$28		
Value of Food Provided by Client (\$)	\$24	\$27	\$33	\$30	\$25	\$24	\$21	\$24	\$32	\$29	\$43	\$25		\$28			
Other In-Kind Donations Received (\$ Value)	\$1,544	\$1,565	\$3,826	\$9,351	\$1,870	\$1,810	\$1,731	\$1,811	\$4,066	\$3,013	\$1,190	\$1,673	\$33,450	\$2,788	\$1		



Fort York Food Bank Monthly Performance Report (FYFB)

Twelve Months ending January 31, 2009	Current Month				Trailing 12 months				From Founding
	2006	2007	2008	Change	2006	2007	2008	Change	
Food Baskets Distributed (3 days of meals/basket)	962	1,319	1,504	56%	10,318	14,114	16,037	55%	95,834
Meals Provided through Food Program	15,057	20,493	22,212	48%	165,744	221,181	244,053	47%	1,536,135
Number of Adult Clients	1,286	1,857	2,007	56%	14,090	19,699	22,293	58%	129,210
Number of Child Clients	387	420	461	19%	4,326	5,086	4,824	12%	40,063
People Assisted through Food Program	1,673	2,277	2,468	48%	18,416	24,785	27,117	47%	169,273
Number of 'First Time' Clients	112	106	88	-21%	1,134	1,378	1,375	21%	14,176
Number of Volunteers	47	51	69	47%	518	628	711	37%	4,798
Volunteer Hours	1,504	1,691	2,484	65%	14,364	18,397	24,456	70%	133,149
Number of Advocacy/Counselling Clients	97	75	248	156%	1,514	1,300	1,368	-10%	13,625
Meals Provided through Community Kitchen	2,246	3,142	3,431	53%	19,748	30,745	36,020	82%	144,301
Number of Donors	22	23	33	50%	443	405	400	-10%	2,399
Cash Donations/Funding Received (\$)	\$24,448	\$10,115	\$8,458	-65%	\$107,282	\$108,744	\$98,940	-8%	\$993,177
Food Donations Received (\$ Value)	\$47,576	\$54,388	\$62,854	32%	\$501,755	\$687,798	\$760,702	52%	\$4,020,681
Value of Food Provided by Client (\$)	\$28	\$24	\$25	-10%	\$27	\$28	\$28	3%	\$24
Other In-Kind Donations Received (\$ Value)	\$2,018	\$2,385	\$1,673	-17%	\$45,376	\$31,760	\$33,450	-26%	\$259,920



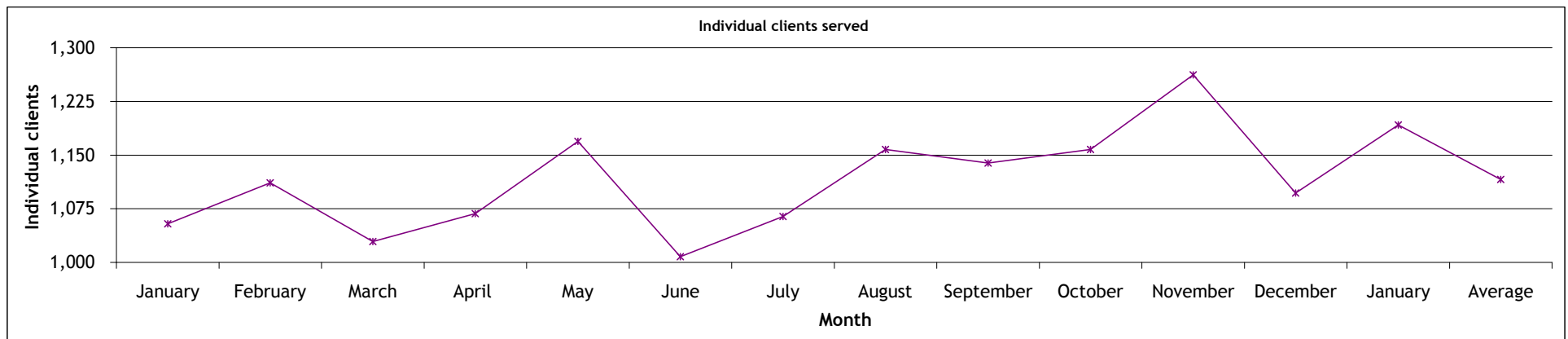
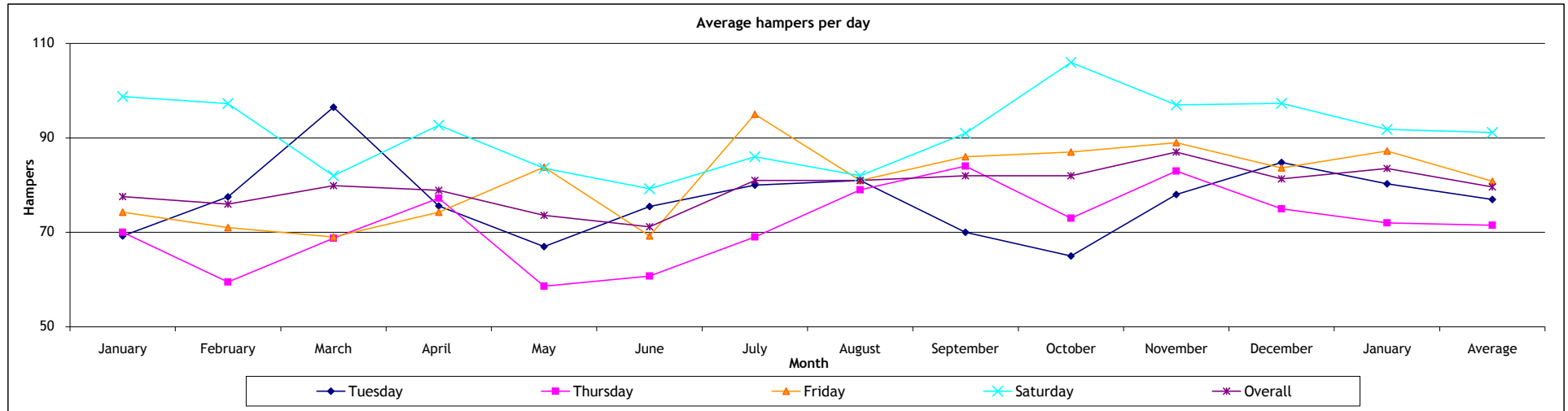
FORT YORK FOOD BANK
Daily operations report
Reporting for: January 2009

DATE	Drop in Centre Meals Served	Food program				Total clients	New clients
		Hampers	Adults	Children			
1/Jan/09							
2/Jan/09	109	80	96	22	118	6	
3/Jan/09	210	86	111	23	134	5	
4/Jan/09							
5/Jan/09							
6/Jan/09	135	59	71	11	82	6	
7/Jan/09	93						
8/Jan/09	187	85	139	29	168	3	
9/Jan/09	196	76	92	51	143	4	
10/Jan/09	226	95	133	37	170	3	
11/Jan/09							
12/Jan/09							
13/Jan/09	175	88	141	39	180	5	
14/Jan/09	126						
15/Jan/09	132	74	90	12	102	7	
16/Jan/09	182	79	93	32	125	5	
17/Jan/09	225	97	114	29	143	5	
18/Jan/09							
19/Jan/09							
20/Jan/09	138	74	134	18	152	9	
21/Jan/09	112						
22/Jan/09	135	84	97	15	112	3	
23/Jan/09	188	107	130	31	161	5	
24/Jan/09	296	98	127	18	145	10	
25/Jan/09							
26/Jan/09							
27/Jan/09	92	100	161	28	189	5	
28/Jan/09	83						
29/Jan/09	97	45	56	9	65	1	
30/Jan/09	109	94	111	43	154	3	
31/Jan/09	185	83	111	14	125	3	
Totals	3,431	1,504	2,007	461	2,468	88	
Individual clients			980	212	1,192		
Daily Averages							
Tuesday	135	80	127	24	151	6	
Wednesday	104	n/a	n/a	n/a	n/a	n/a	
Thursday	138	72	96	16	112	4	
Friday	157	87	104	36	140	5	
Saturday	228	92	119	24	143	5	
Overall	156	84	112	26	137	5	

Fort York Food Bank (FYFB)
Food Program Averages

Daily hampers	January	February	March	April	May	June	July	August	September	October	November	December	January	Average
Tuesday	69	78	97	76	67	76	80	81	70	65	78	85	80	77
Wednesday												28		28
Thursday	70	60	69	77	59	61	69	79	84	73	83	75	72	72
Friday	74	71	69	74	84	69	95	81	86	87	89	84	87	81
Saturday	99	97	82	93	84	79	86	82	91	106	97	97	92	91
Overall	78	76	80	79	74	71	81	81	82	82	87	81	84	80

Individual clients served	January	February	March	April	May	June	July	August	September	October	November	December	January	Average
	1,054	1,111	1,029	1,068	1,169	1,008	1,064	1,158	1,139	1,158	1,262	1,097	1,192	1,116



Fort York Food Bank (FYFB)

Advocacy/Counselling Operations Report

Twelve Months ending January 31, 2009	2008 2009												Past 12 months	
	Feb	March	April	May	June	July	Aug	Sept	Oct	Nov	Dec	Jan	Total	Average
Outreach Meetings	0	2	0	1	6	6	6	0	3	4	2	4	34	3
Referrals to Partners	9	17	3	9	6	8	6	19	11	12	10	16	126	11
Community Partners	11	11	11	11	11	11	11	13	15	15	15	15	150	13
Community Partner Retention	100%	100%	100%	100%	100%	100%	100%	100%	100%	100%	100%	100%	-	100%
Counselling Service Users	63	96	63	95	80	92	66	129	144	187	105	248	1,368	114
3rd Party Intervention - Meetings	1	2	1	3	8	9	5	6	2	4	2	10	53	4
3rd Party Intervention - Letters/Applications	8	23	18	3	6	3	7	14	7	10	7	10	116	10
Cross-Cultural Language Services	20	16	16	40	23	30	19	39	42	38	34	47	364	30
Languages Supported	6	6	6	6	6	6	6	6	6	6	6	6	72	6
Workshop Partners	7	7	7	7	7	7	7	8	9	9	9	9	93	8
Workshops Delivered	4	1	2	2	1	1	1	3	2	4	4	1	26	2
Workshop Attendance	10	12	25	23	8	8	9	45	11	24	36	10	221	18
Counsellors	10	11	11	10	11	9	9	10	10	12	13	12	128	11
Counsellor Retention	100%	100%	100%	91%	100%	82%	100%	100%	100%	100%	100%	92%	-	97%
Senior Volunteers	6	7	7	7	7	7	9	9	10	9	9	9	96	8
Senior Volunteer Hours	402	320	400	502	390	474	536	489	567	508	470	503	5,560	463
New General Volunteers - Trained	4	4	5	6	2	1	4	2	4	5	2	5	44	4
Volunteer Hours	426	347	383	465	449	415	345	442	495	562	364	395	5,088	424

Case BreakDown

Housing	5	2	0	9	3	9	7	8	12	11	6	17	12%
Legal clinic/ID	4	2	2	4	6	2	5	10	6	8	3	5	8%
OW/ODSP/EI	21	10	13	25	24	30	19	22	44	47	23	15	41%
Training/Employment	2	13	7	6	7	3	2	5	3	4	0	4	8%
Financial (Tax Returns, CTB, etc.)	1	12	12	1	3	2	4	3	2	2	1	2	6%
Health	1	4	3	2	7	3	2	7	6	7	5	13	8%
Immigration	0	1	2	1	1	1	1	1	2	4	1	0	2%
Other	1	6	1	3	4	1	7	10	14	16	4	38	15%