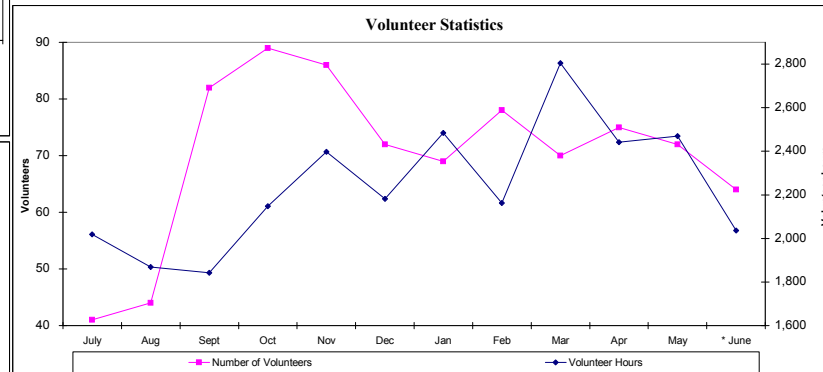
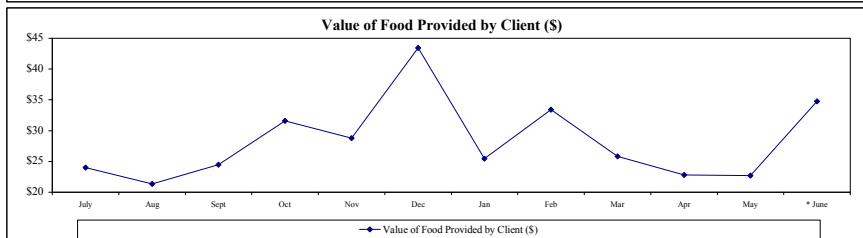
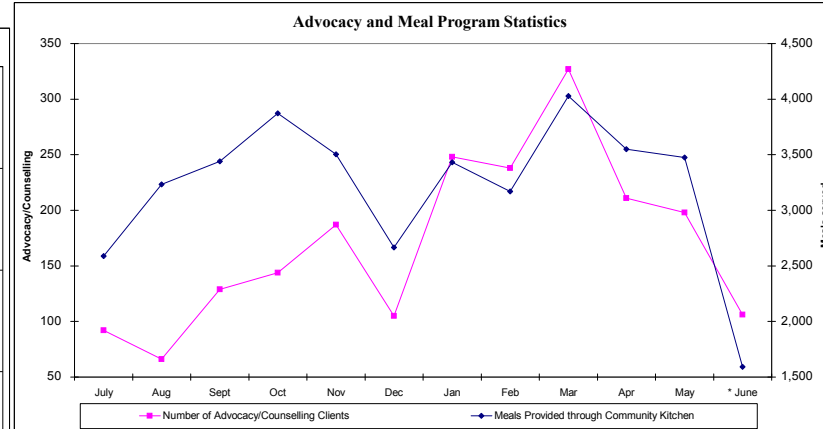
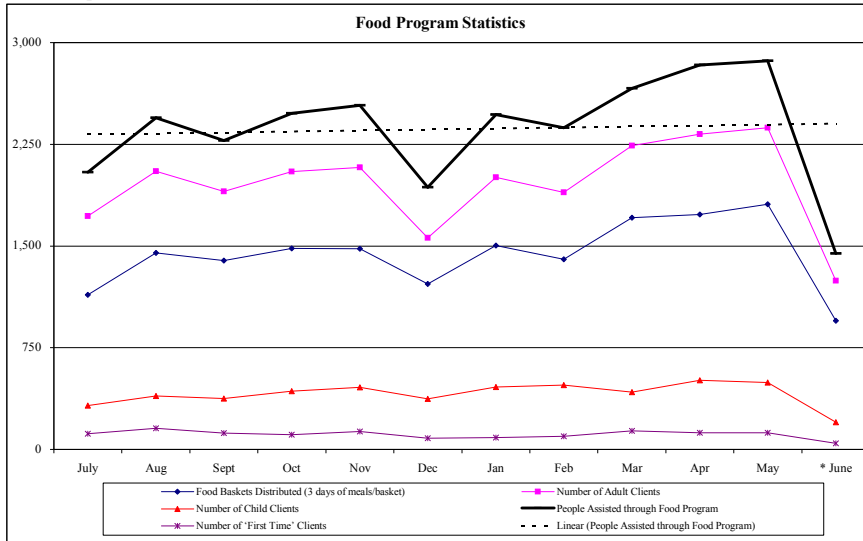


Fort York Food Bank Monthly Performance Report (FYFB)

Twelve Months ending June 30, 2009	2008						2009						12 Month Rolling Figures		
	July	Aug	Sept	Oct	Nov	Dec	Jan	Feb	Mar	Apr	May	* June	Current Total	Current Average	Ratios
Food Baskets Distributed (3 days of meals/basket)	1,140	1,450	1,393	1,482	1,479	1,220	1,504	1,403	1,710	1,733	1,807	950	17,271	1,439	
Meals Provided through Food Program	18,387	22,005	20,493	22,302	22,833	17,406	22,212	21,339	23,967	25,506	25,785	13,005	255,240	21,270	14.78
Number of Adult Clients	1,720	2,050	1,902	2,048	2,079	1,560	2,007	1,896	2,240	2,324	2,371	1,245	23,442	1,954	83%
Number of Child Clients	323	395	375	430	458	374	461	475	423	510	494	200	4,918	410	17%
People Assisted through Food Program	2,043	2,445	2,277	2,478	2,537	1,934	2,468	2,371	2,663	2,834	2,865	1,445	28,360	2,363	100%
Number of 'First Time' Clients	115	155	120	109	131	82	88	96	136	123	122	46	1,323	110	5%
Number of Volunteers	41	44	82	89	86	72	69	78	70	75	72	64	842	70	
Volunteer Hours	2,019	1,869	1,843	2,148	2,398	2,181	2,484	2,163	2,805	2,441	2,469	2,036	26,856	2,238	31.90
Number of Advocacy/Counselling Clients	92	66	129	144	187	105	248	238	327	211	198	106	2,051	171	12%
Meals Provided through Community Kitchen	2,589	3,233	3,440	3,871	3,505	2,667	3,431	3,170	4,027	3,549	3,476	1,593	38,551	3,213	13%
Number of Donors	20	19	21	40	45	78	33	36	28	44	30	47	441	37	
Cash Donations/Funding Received (\$)	\$4,193	\$212	\$665	\$4,037	\$12,072	\$32,424	\$8,458	\$9,113	\$825	\$34,381	\$1,408	\$29,208	\$136,996	\$11,416	\$5
Food Donations Received (\$ Value)	\$49,060	\$52,198	\$55,744	\$78,217	\$72,990	\$83,998	\$62,854	\$79,274	\$68,788	\$64,605	\$64,980	\$50,216	\$782,924	\$65,244	\$28
Value of Food Provided by Client (\$)	\$24	\$21	\$24	\$32	\$29	\$43	\$25	\$33	\$26	\$23	\$23	\$35		\$28	
Other In-Kind Donations Received (\$ Value)	\$1,810	\$1,731	\$1,811	\$4,066	\$3,013	\$1,190	\$1,673	\$1,075	\$2,887	\$3,535	\$2,862	\$2,094	\$27,747	\$2,312	\$1

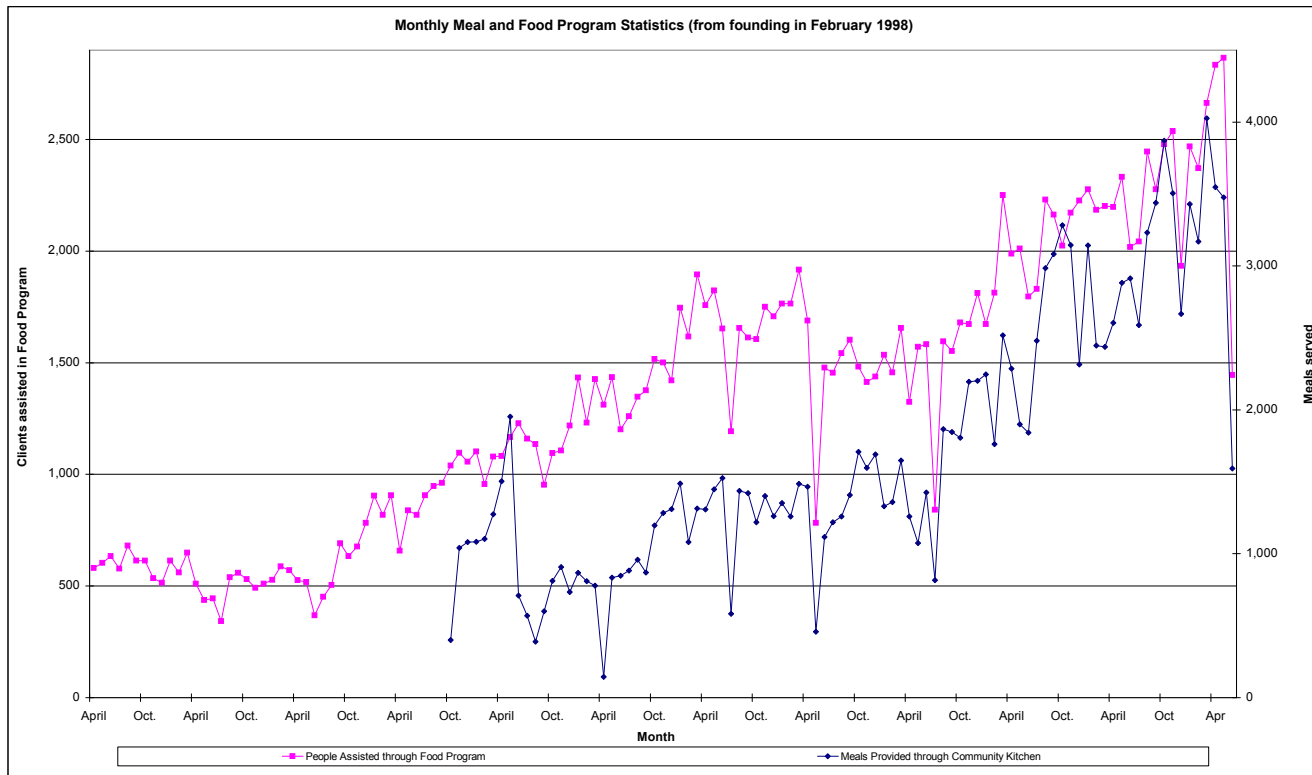
* FYFB operations were closed for 2 weeks in June 2009 to carry out renovations



Fort York Food Bank Monthly Performance Report (FYFB)

Twelve Months ending June 30, 2009	Current Month				Trailing 12 months				From Founding
	2007	2008	* 2009	Change	2007	2008	2009	Change	
Food Baskets Distributed (3 days of meals/basket)	1,020	1,139	950	-7%	11,676	14,893	17,271	48%	103,437
Meals Provided through Food Program	16,164	18,162	13,005	-20%	186,192	230,847	255,240	37%	1,645,737
Number of Adult Clients	1,404	1,651	1,245	-11%	15,977	20,951	23,442	47%	139,286
Number of Child Clients	392	367	200	-49%	4,711	4,908	4,918	4%	42,165
People Assisted through Food Program	1,796	2,018	1,445	-20%	20,688	25,859	28,360	37%	181,451
Number of 'First Time' Clients	108	99	46	-57%	1,345	1,288	1,323	-2%	14,699
Number of Volunteers	51	43	64	25%	582	574	842	45%	5,157
Volunteer Hours	1,464	1,647	2,036	39%	17,169	20,104	26,856	56%	145,063
Number of Advocacy/Counselling Clients	81	80	106	31%	1,301	1,196	2,051	58%	14,705
Meals Provided through Community Kitchen	1,842	2,913	1,593	-14%	23,287	33,721	38,551	66%	160,116
Number of Donors	25	29	47	88%	395	388	441	12%	2,584
Cash Donations/Funding Received (\$)	\$4,134	\$13,959	\$29,208	607%	\$118,202	\$91,830	\$136,996	16%	\$1,068,112
Food Donations Received (\$ Value)	\$45,513	\$50,559	\$50,216	10%	\$560,726	\$730,571	\$782,924	40%	\$4,348,544
Value of Food Provided by Client (\$)	\$25	\$25	\$35	37%	\$27	\$28	\$28	2%	\$24
Other In-Kind Donations Received (\$ Value)	\$1,138	\$1,870	\$2,094	84%	\$34,623	\$40,277	\$27,747	-20%	\$272,373

* FYFB operations were closed for 2 weeks in June 2009 to carry out renovations

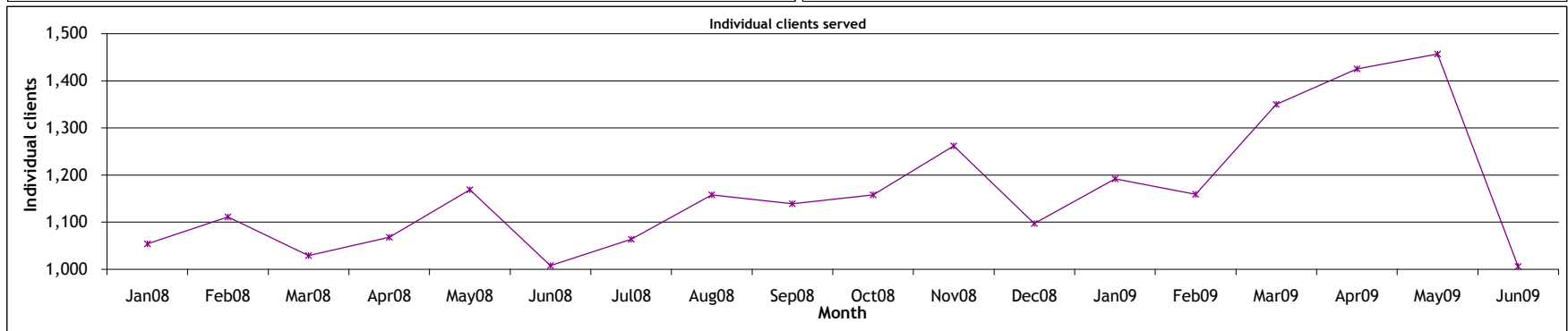
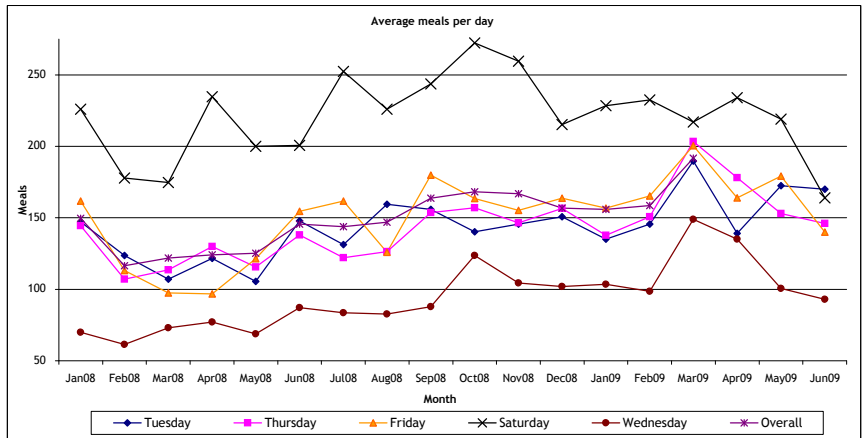
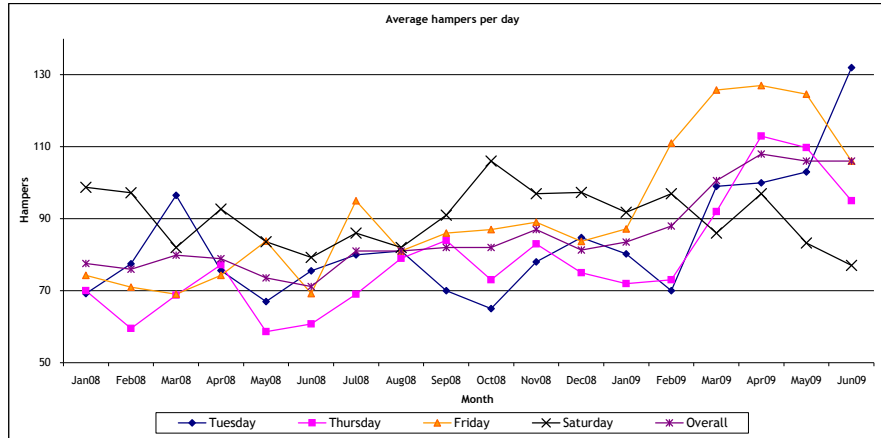


FORT YORK FOOD BANK
Daily operations report
Reporting for: June 2009

DATE	Drop in Centre Meals Served	Food program			Total clients	New clients
		Hampers	Adults	Children		
1/Jun/09						
2/Jun/09						
3/Jun/09						
4/Jun/09						
5/Jun/09						
6/Jun/09						
7/Jun/09						
8/Jun/09						
9/Jun/09						
10/Jun/09						
11/Jun/09						
12/Jun/09						
13/Jun/09						
14/Jun/09						
15/Jun/09						
16/Jun/09	183	174	208	25	233	14
17/Jun/09	94					
18/May/09	135	98	111	8	119	1
19/Jun/09	195	108	184	53	237	4
20/Jun/09	208	85	108	11	119	5
21/Jun/09						
22/Jun/09						
23/Jun/09	178	123	145	15	160	9
24/Jun/09	91					
25/Jun/09	156	92	114	24	138	5
26/Jun/09	85	104	165	41	206	0
27/Jun/09	119	68	85	7	92	4
28/Jun/09						
29/Jun/09						
30/Jun/09	149	98	125	16	141	4
Totals	1,593	950	1,245	200	1,445	46
Individual clients			871	135	1,006	
Daily Averages						
Tuesday	170	132	159	19	178	9
Wednesday	93	n/a	n/a	n/a	n/a	n/a
Thursday	146	95	113	16	129	3
Friday	140	106	175	47	222	2
Saturday	164	77	97	9	106	5
Overall	145	106	138	22	161	5

Fort York Food Bank (FYFB)
Food and Meal Program Averages

Average daily hampers	Jan08	Feb08	Mar08	Apr08	May08	Jun08	Jul08	Aug08	Sep08	Oct08	Nov08	Dec08	Jan09	Feb09	Mar09	Apr09	May09	Jun09	12 month average
Tuesday	69	78	97	76	67	76	80	81	70	65	78	85	80	70	99	100	103	132	87
Wednesday												28							28
Thursday	70	60	69	77	59	61	69	79	84	73	83	75	72	73	92	113	110	95	85
Friday	74	71	69	74	84	69	95	81	86	87	89	84	87	111	126	127	125	106	100
Saturday	99	97	82	93	84	79	86	82	91	106	97	97	92	97	86	97	83	77	91
Overall	78	76	80	79	74	71	81	81	82	82	87	81	84	88	101	108	106	106	91
Sequential growth (%)		(2)	5	(1)	(7)	(3)	14	0	1	0	6	(7)	3	5	14	7	(2)	0	
Average daily meals	Jan08	Feb08	Mar08	Apr08	May08	Jun08	Jul08	Aug08	Sep08	Oct08	Nov08	Dec08	Jan09	Feb09	Mar09	Apr09	May09	Jun09	12 month average
Tuesday	147	124	107	122	106	148	131	160	156	140	146	151	135	146	190	139	173	170	153
Wednesday	70	62	73	77	69	87	84	83	88	124	105	102	104	99	149	135	101	93	105
Thursday	144	107	114	130	116	138	122	126	154	157	147	157	138	151	203	178	153	146	153
Friday	162	113	98	97	121	155	162	126	180	164	155	164	157	165	201	164	179	140	163
Saturday	226	178	175	235	200	201	252	226	244	272	260	215	228	233	217	234	219	164	230
Overall	150	116	122	124	125	146	144	147	164	168	167	157	156	159	192	169	166	145	161
Sequential growth (%)		(22)	5	2	1	16	(1)	2	11	3	(1)	(6)	(1)	2	21	(12)	(2)	(13)	
Individual clients served	1,054	1,111	1,029	1,068	1,169	1,008	1,064	1,158	1,139	1,158	1,262	1,097	1,192	1,159	1,350	1,425	1,457	1,006	1,206
Sequential growth (%)		5	(7)	4	9	(14)	6	9	(2)	2	9	(13)	9	(3)	16	6	2	(31)	



Fort York Food Bank (FYFB)

Advocacy/Counselling Operations Report

<i>Twelve Months ending June 30, 2009</i>	<i>2008</i>												<i>2009</i>		<i>Past 12 months</i>	
	July	Aug	Sept	Oct	Nov	Dec	Jan	Feb	March	April	May	June	Total	Average		
Outreach Meetings	6	6	0	3	4	2	4	3	4	2	2	0	36	3		
Referrals to Partners	8	6	19	11	12	10	16	23	12	43	28	17	205	17		
Community Partners	11	11	13	15	15	15	15	16	15	15	15	15	171	14		
Community Partner Retention	100%	100%	100%	100%	100%	100%	100%	100%	94%	100%	100%	100%	-	99%		
Counselling Service Users	92	66	129	144	187	105	248	238	327	211	198	106	2,051	171		
3rd Party Intervention - Meetings	9	5	6	2	4	2	10	5	23	11	9	2	88	7		
3rd Party Intervention - Letters/Applications	3	7	14	7	10	7	10	17	13	23	16	16	143	12		
Cross-Cultural Language Services	30	19	39	42	38	34	47	58	40	41	35	18	441	37		
Languages Supported	6	6	6	6	6	6	6	6	6	6	6	6	72	6		
Workshop Partners	7	7	8	9	9	9	9	9	9	9	9	9	103	9		
Workshops Delivered	1	1	3	2	4	4	1	7	7	8	5	1	44	4		
Workshop Attendance	8	9	45	11	24	36	10	57	120	97	33	6	456	38		
Counsellors	9	9	10	10	12	13	12	13	13	12	10	9	132	11		
Counsellor Retention	82%	100%	100%	100%	100%	100%	92%	100%	100%	92%	83%	90%	-	95%		
Senior Volunteers	7	9	9	10	9	9	9	9	9	9	10	10	109	9		
Senior Volunteer Hours	474	536	489	567	508	470	503	462	538	543	615	775	6,480	540		
New General Volunteers - Trained	1	4	2	4	5	2	5	8	9	6	7	7	60	5		
Volunteer Hours	415	345	442	495	562	364	395	427	472	460	538	584	5,499	458		

Case BreakDown

Housing	9	7	8	12	11	6	17	15	12	9	6	1	13%
Legal clinic/ID	2	5	10	6	8	3	5	3	8	3	5	2	7%
OW/ODSP/EI	30	19	22	44	47	23	15	22	37	45	23	24	39%
Training/Employment	3	2	5	3	4	0	4	6	11	3	5	1	5%
Financial (Tax Returns, CTB, etc.)	2	4	3	2	2	1	2	5	8	6	4	0	4%
Health	3	2	7	6	7	5	13	14	14	7	8	4	10%
Immigration	1	1	1	2	4	1	0	5	3	5	5	1	3%
Other	1	7	10	14	16	4	38	34	23	9	14	5	19%