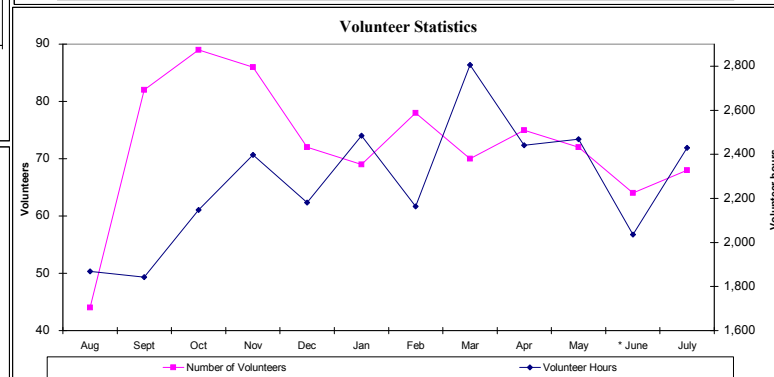
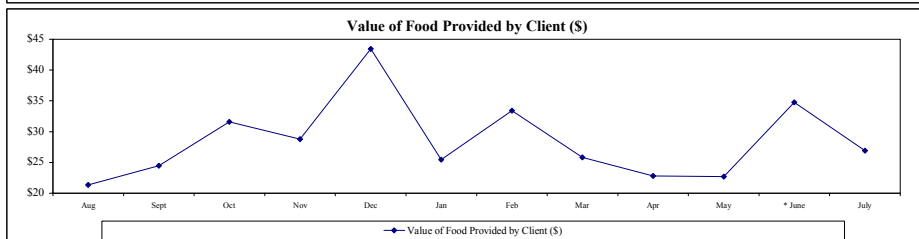
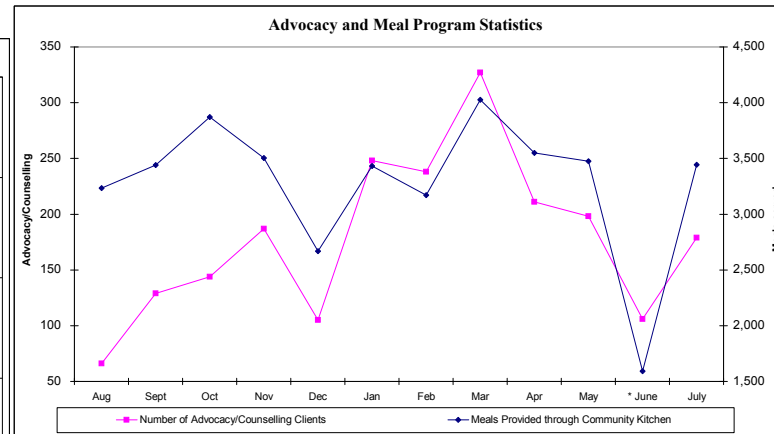
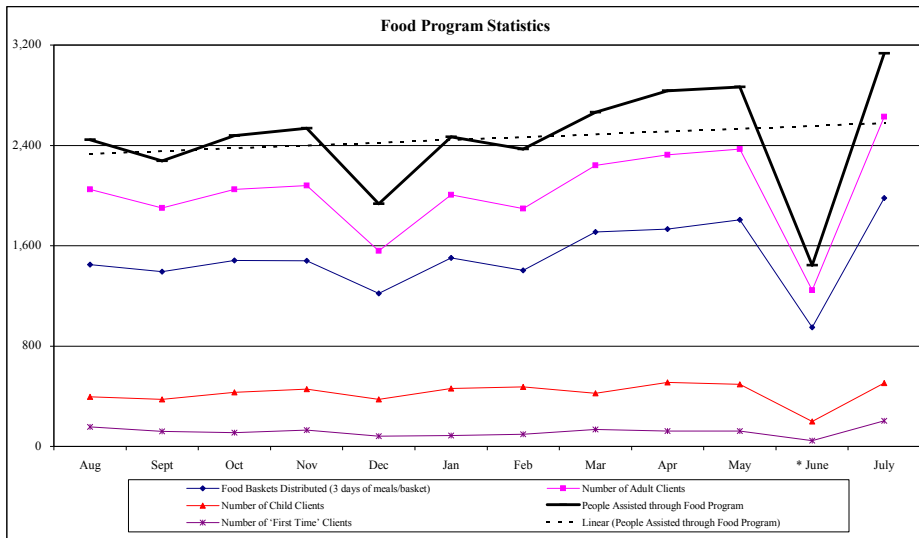


## Fort York Food Bank Monthly Performance Report (FYFB)

Twelve Months ending July 31, 2009	2008					2009							12 Month Rolling Figures		
	Aug	Sept	Oct	Nov	Dec	Jan	Feb	Mar	Apr	May	* June	July	Current Total	Current Average	Ratios
Food Baskets Distributed (3 days of meals/basket)	1,450	1,393	1,482	1,479	1,220	1,504	1,403	1,710	1,733	1,807	950	1,980	18,111	1,509	
Meals Provided through Food Program	22,005	20,493	22,302	22,833	17,406	22,212	21,339	23,967	25,506	25,785	13,005	28,206	265,059	22,088	14.64
Number of Adult Clients	2,050	1,902	2,048	2,079	1,560	2,007	1,896	2,240	2,324	2,371	1,245	2,628	24,350	2,029	83%
Number of Child Clients	395	375	430	458	374	461	475	423	510	494	200	506	5,101	425	17%
People Assisted through Food Program	2,445	2,277	2,478	2,537	1,934	2,468	2,371	2,663	2,834	2,865	1,445	3,134	29,451	2,454	100%
Number of 'First Time' Clients	155	120	109	131	82	88	96	136	123	122	46	204	1,412	118	5%
Number of Volunteers	44	82	89	86	72	69	78	70	75	72	64	68	869	72	
Volunteer Hours	1,869	1,843	2,148	2,398	2,181	2,484	2,163	2,805	2,441	2,469	2,036	2,430	27,267	2,272	31.38
Number of Advocacy/Counselling Clients	66	129	144	187	105	248	238	327	211	198	106	179	2,138	178	12%
Meals Provided through Community Kitchen	3,233	3,440	3,871	3,505	2,667	3,431	3,170	4,027	3,549	3,476	1,593	3,444	39,406	3,284	13%
Number of Donors	19	21	40	45	78	33	36	28	44	30	47	34	455	38	
Cash Donations/Funding Received (\$)	\$212	\$665	\$4,037	\$12,072	\$32,424	\$8,458	\$9,113	\$825	\$34,381	\$1,408	\$29,208	\$3,217	\$136,020	\$11,335	\$5
Food Donations Received (\$ Value)	\$52,198	\$55,744	\$78,217	\$72,990	\$83,998	\$62,854	\$79,274	\$68,788	\$64,605	\$64,980	\$50,216	\$84,374	\$818,238	\$68,187	\$28
Value of Food Provided by Client (\$)	\$21	\$24	\$32	\$29	\$43	\$25	\$33	\$26	\$23	\$23	\$35	\$27		\$28	
Other In-Kind Donations Received (\$ Value)	\$1,731	\$1,811	\$4,066	\$3,013	\$1,190	\$1,673	\$1,075	\$2,887	\$3,535	\$2,862	\$2,094	\$2,410	\$28,347	\$2,362	\$1

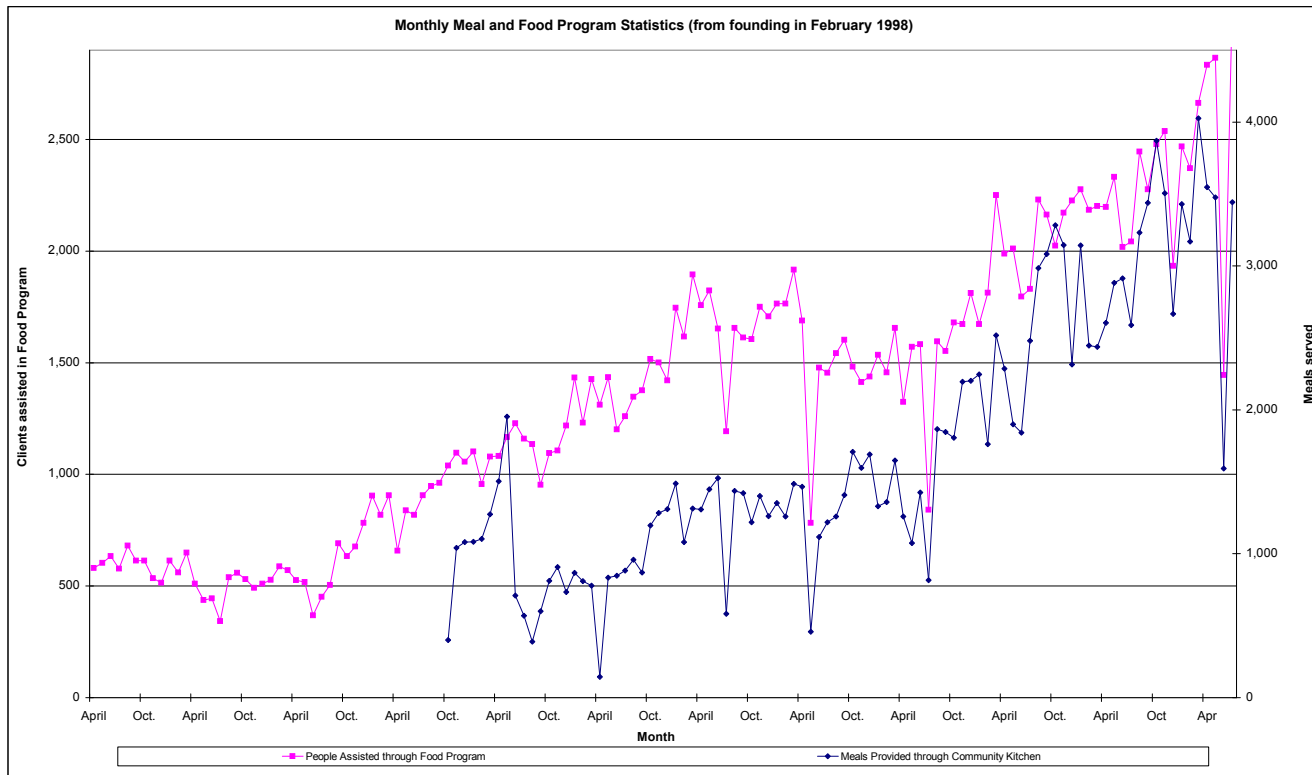
\* FYFB operations were closed for 2 weeks in June 2009 to carry out renovations



## Fort York Food Bank Monthly Performance Report (FYFB)

Twelve Months ending July 31, 2009	Current Month				Trailing 12 months				From Founding
	2007	2008	* 2009	Change	2007	2008	2009	Change	
Food Baskets Distributed (3 days of meals/basket)	1,085	1,140	1,980	82%	12,300	14,948	18,111	47%	105,417
Meals Provided through Food Program	16,479	18,387	28,206	71%	195,102	232,755	265,059	36%	1,673,943
Number of Adult Clients	1,469	1,720	2,628	79%	16,825	21,202	24,350	45%	141,914
Number of Child Clients	362	323	506	40%	4,853	4,869	5,101	5%	42,671
People Assisted through Food Program	1,831	2,043	3,134	71%	21,678	26,071	29,451	36%	184,585
Number of 'First Time' Clients	85	115	204	140%	1,384	1,318	1,412	2%	14,903
Number of Volunteers	49	41	68	39%	593	566	869	47%	5,225
Volunteer Hours	1,319	2,019	2,430	84%	17,336	20,804	27,267	57%	147,493
Number of Advocacy/Counselling Clients	221	92	179	-19%	1,450	1,067	2,138	47%	14,884
Meals Provided through Community Kitchen	2,480	2,589	3,444	39%	24,950	33,830	39,406	58%	163,560
Number of Donors	28	20	34	21%	399	380	455	14%	2,618
Cash Donations/Funding Received (\$)	\$1,813	\$4,193	\$3,217	77%	\$116,508	\$94,209	\$136,020	17%	\$1,071,329
Food Donations Received (\$ Value)	\$52,183	\$49,060	\$84,374	62%	\$590,625	\$727,448	\$818,238	39%	\$4,432,918
Value of Food Provided by Client (\$)	\$28	\$24	\$27	-6%	\$27	\$28	\$28	2%	\$24
Other In-Kind Donations Received (\$ Value)	\$1,870	\$1,810	\$2,410	29%	\$31,478	\$40,217	\$28,347	-10%	\$274,783

\* FYFB operations were closed for 2 weeks in June 2009 to carry out renovations

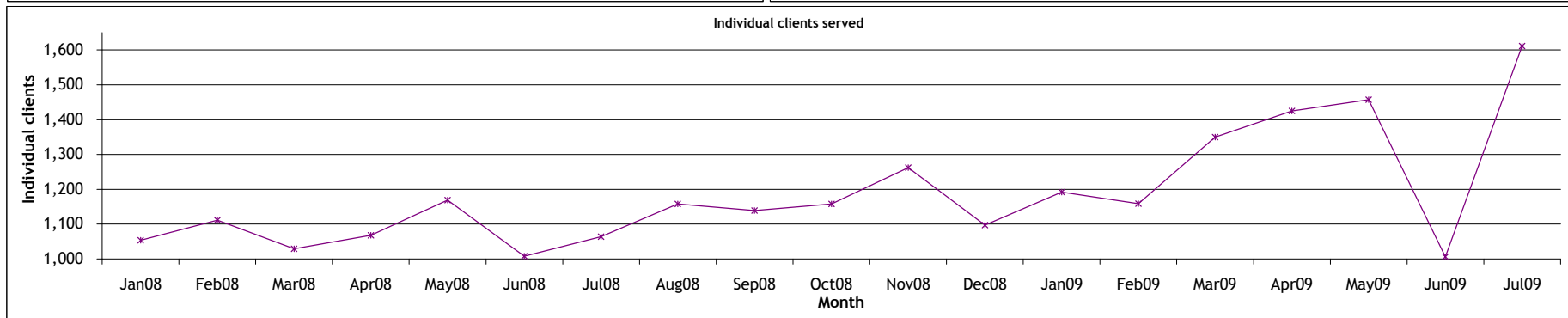
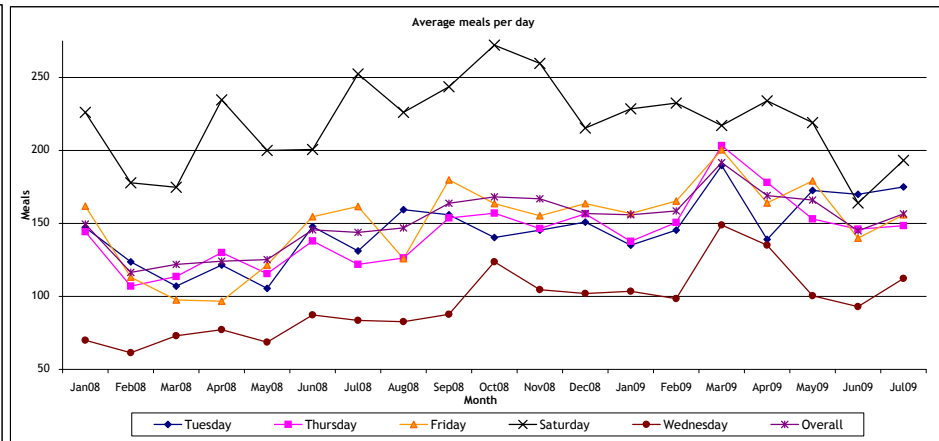
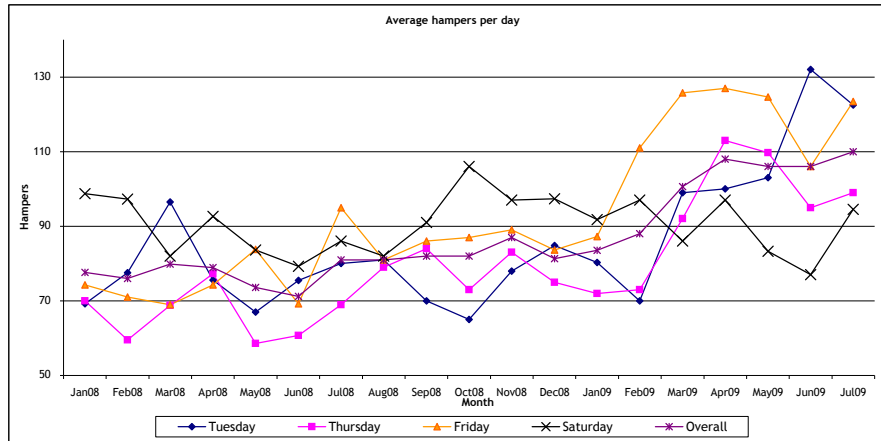


**FORT YORK FOOD BANK**  
**Daily operations report**  
**Reporting for: July 2009**

DATE	Drop in Centre Meals Served	Food program			Total clients	New clients
		Hampers	Adults	Children		
1/Jul/09						
2/Jul/09	121	88	111	25	136	8
3/Jul/09	178	125	195	44	239	3
4/Jul/09	193	87	113	19	132	12
5/Jul/09						
6/Jul/09						
7/Jul/09	187	104	126	15	141	9
8/Jul/09	81					
9/Jul/09	150	100	129	34	163	4
10/Jul/09	185	132	160	49	209	5
11/Jul/09	178	79	105	21	126	17
12/Jul/09						
13/Jul/09						
14/Jul/09	167	135	155	19	174	8
15/Jul/09	143					
16/Jul/09	187	128	160	32	192	17
17/Jul/09	130	124	193	32	225	9
18/Jul/09	201	102	124	16	140	16
19/Jul/09						
20/Jul/09						
21/Jul/09	198	140	158	19	177	19
22/Jul/09	137					
23/Jul/09	186	89	131	31	162	14
24/Jul/09	160	140	212	33	245	17
25/Jul/09	201	110	142	17	159	20
26/Jul/09						
27/Jul/09						
28/Jul/09	148	111	133	22	155	10
29/Jul/09	88					
30/Jul/09	98	90	119	47	166	8
31/Jul/09	127	96	162	31	193	8
<b>Totals</b>	<b>3,444</b>	<b>1,980</b>	<b>2,628</b>	<b>506</b>	<b>3,134</b>	<b>204</b>
<b>Individual clients</b>			<b>1,376</b>	<b>235</b>	<b>1,611</b>	
<b>Daily Averages</b>						
Tuesday	175	123	143	19	162	12
Wednesday	112	n/a	n/a	n/a	n/a	n/a
Thursday	148	99	130	34	164	10
Friday	156	123	184	38	222	8
Saturday	193	95	121	18	139	16
<b>Overall</b>	<b>157</b>	<b>110</b>	<b>146</b>	<b>28</b>	<b>174</b>	<b>11</b>

**Fort York Food Bank (FYFB)**  
**Food and Meal Program Averages**

Average daily hampers	Jan08	Feb08	Mar08	Apr08	May08	Jun08	Jul08	Aug08	Sep08	Oct08	Nov08	Dec08	Jan09	Feb09	Mar09	Apr09	May09	Jun09	Jul09	12 month average
Tuesday	69	78	97	76	67	76	80	81	70	65	78	85	80	70	99	100	103	132	123	90
Wednesday												28								28
Thursday	70	60	69	77	59	61	69	79	84	73	83	75	72	73	92	113	110	95	99	87
Friday	74	71	69	74	84	69	95	81	86	87	89	84	87	111	126	127	125	106	123	103
Saturday	99	97	82	93	84	79	86	82	91	106	97	97	92	97	86	97	83	77	95	92
<b>Overall</b>	<b>78</b>	<b>76</b>	<b>80</b>	<b>79</b>	<b>74</b>	<b>71</b>	<b>81</b>	<b>81</b>	<b>82</b>	<b>82</b>	<b>87</b>	<b>81</b>	<b>84</b>	<b>88</b>	<b>101</b>	<b>108</b>	<b>106</b>	<b>106</b>	<b>110</b>	<b>93</b>
<i>Sequential growth (%)</i>		(2)	5	(1)	(7)	(3)	14	0	1	0	6	(7)	3	5	14	7	(2)	0	4	
Average daily meals	Jan08	Feb08	Mar08	Apr08	May08	Jun08	Jul08	Aug08	Sep08	Oct08	Nov08	Dec08	Jan09	Feb09	Mar09	Apr09	May09	Jun09	Jul09	12 month average
Tuesday	147	124	107	122	106	148	131	160	156	140	146	151	135	146	190	139	173	170	175	157
Wednesday	70	62	73	77	69	87	84	83	88	124	105	102	104	99	149	135	101	93	112	108
Thursday	144	107	114	130	116	138	122	126	154	157	147	157	138	151	203	178	153	146	148	155
Friday	162	113	98	97	121	155	162	126	180	164	155	164	157	165	201	164	179	140	156	162
Saturday	226	178	175	235	200	201	252	226	244	272	260	215	228	233	217	234	219	164	193	225
<b>Overall</b>	<b>150</b>	<b>116</b>	<b>122</b>	<b>124</b>	<b>125</b>	<b>146</b>	<b>144</b>	<b>147</b>	<b>164</b>	<b>168</b>	<b>167</b>	<b>157</b>	<b>156</b>	<b>159</b>	<b>192</b>	<b>169</b>	<b>166</b>	<b>145</b>	<b>157</b>	<b>162</b>
<i>Sequential growth (%)</i>		(22)	5	2	1	16	(1)	2	11	3	(1)	(6)	(1)	2	21	(12)	(2)	(13)	8	
<b>Individual clients served</b>	<b>1,054</b>	<b>1,111</b>	<b>1,029</b>	<b>1,068</b>	<b>1,169</b>	<b>1,008</b>	<b>1,064</b>	<b>1,158</b>	<b>1,139</b>	<b>1,158</b>	<b>1,262</b>	<b>1,097</b>	<b>1,192</b>	<b>1,159</b>	<b>1,350</b>	<b>1,425</b>	<b>1,457</b>	<b>1,006</b>	<b>1,611</b>	<b>1,251</b>
<i>Sequential growth (%)</i>		5	(7)	4	9	(14)	6	9	(2)	2	9	(13)	9	(3)	16	6	2	(31)	60	



# Fort York Food Bank (FYFB)

## Advocacy/Counselling Operations Report

Twelve Months ending July 31, 2009	2008												2009		Past 12 months	
	Aug	Sept	Oct	Nov	Dec	Jan	Feb	March	April	May	June	July	Total	Average		
Outreach Meetings	6	0	3	4	2	4	3	4	2	2	0	1	37	3		
Referrals to Partners	6	19	11	12	10	16	23	12	43	28	17	18	223	19		
Community Partners	11	13	15	15	15	15	16	15	15	15	15	15	186	16		
Community Partner Retention	100%	100%	100%	100%	100%	100%	100%	94%	100%	100%	100%	100%	-	100%		
Counselling Service Users	66	129	144	187	105	248	238	327	211	198	106	179	2,230	186		
3rd Party Intervention - Meetings	5	6	2	4	2	10	5	23	11	9	2	3	91	8		
3rd Party Intervention - Letters/Applications	7	14	7	10	7	10	17	13	23	16	16	11	154	13		
Cross-Cultural Language Services	19	39	42	38	34	47	58	40	41	35	18	59	500	42		
Languages Supported	6	6	6	6	6	6	6	6	6	6	6	6	78	7		
Workshop Partners	7	8	9	9	9	9	9	9	9	9	9	9	112	9		
Workshops Delivered	1	3	2	4	4	1	7	7	8	5	1	1	45	4		
Workshop Attendance	9	45	11	24	36	10	57	120	97	33	6	7	463	39		
Counsellors	9	10	10	12	13	12	13	13	12	10	9	10	142	12		
Counsellor Retention	100%	100%	100%	100%	100%	92%	100%	100%	92%	83%	90%	100%	-	95%		
Senior Volunteers	9	9	10	9	9	9	9	9	9	10	10	11	120	10		
Senior Volunteer Hours	536	489	567	508	470	503	462	538	543	615	775	686	7,166	597		
New General Volunteers - Trained	4	2	4	5	2	5	8	9	6	7	7	4	64	5		
Volunteer Hours	345	442	495	562	364	395	427	472	460	538	584	671	6,170	514		

### Case BreakDown

Housing	7	8	12	11	6	17	15	12	9	6	1	5	12%
Legal clinic/ID	5	10	6	8	3	5	3	8	3	5	2	3	7%
OW/ODSP/EI	19	22	44	47	23	15	22	37	45	23	24	52	40%
Training/Employment	2	5	3	4	0	4	6	11	3	5	1	3	5%
Financial (Tax Returns, CTB, etc.)	4	3	2	2	1	2	5	8	6	4	0	1	4%
Health	2	7	6	7	5	13	14	14	7	8	4	10	10%
Immigration	1	1	2	4	1	0	5	3	5	5	1	0	3%
Other	7	10	14	16	4	38	34	23	9	14	5	7	19%