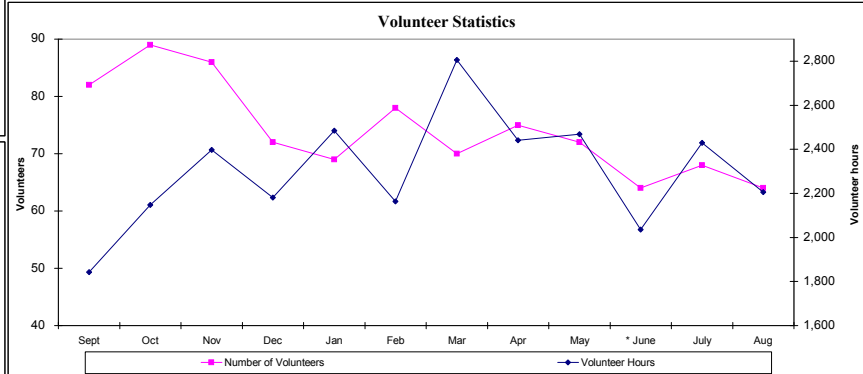
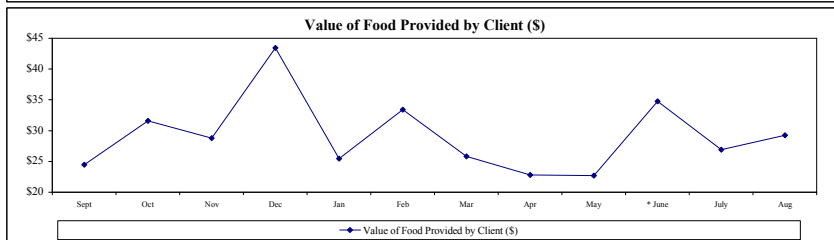
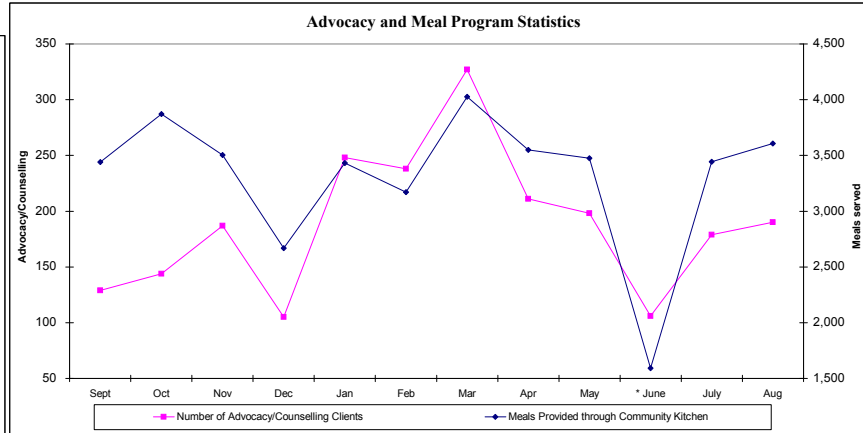
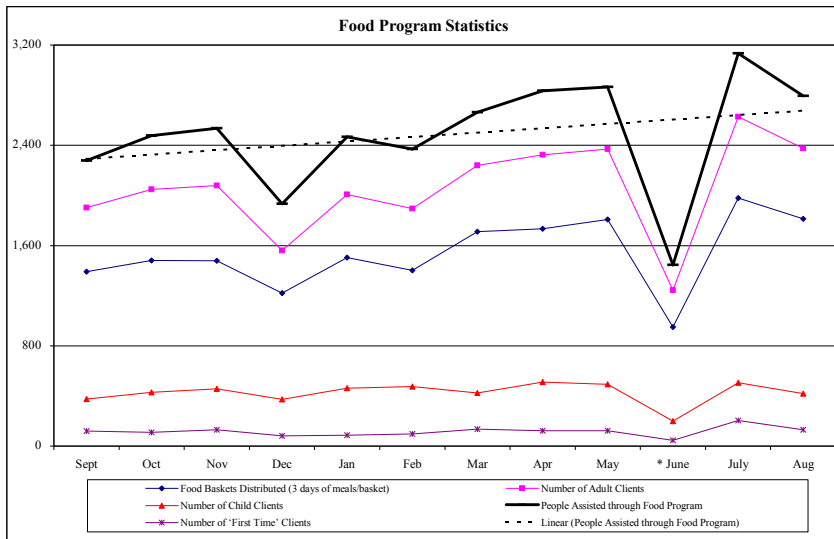


Fort York Food Bank Monthly Performance Report (FYFB)

Twelve Months ending August 31, 2009	2008				2009								12 Month Rolling Figures		
	Sept	Oct	Nov	Dec	Jan	Feb	Mar	Apr	May	* June	July	Aug	Current Total	Current Average	Ratios
Food Baskets Distributed (3 days of meals/basket)	1,393	1,482	1,479	1,220	1,504	1,403	1,710	1,733	1,807	950	1,980	1,813	18,474	1,540	
Meals Provided through Food Program	20,493	22,302	22,833	17,406	22,212	21,339	23,967	25,506	25,785	13,005	28,206	25,146	268,200	22,350	14.52
Number of Adult Clients	1,902	2,048	2,079	1,560	2,007	1,896	2,240	2,324	2,371	1,245	2,628	2,374	24,674	2,056	83%
Number of Child Clients	375	430	458	374	461	475	423	510	494	200	506	420	5,126	427	17%
People Assisted through Food Program	2,277	2,478	2,537	1,934	2,468	2,371	2,663	2,834	2,865	1,445	3,134	2,794	29,800	2,483	100%
Number of 'First Time' Clients	120	109	131	82	88	96	136	123	122	46	204	130	1,387	116	5%
Number of Volunteers	82	89	86	72	69	78	70	75	72	64	68	64	889	74	
Volunteer Hours	1,843	2,148	2,398	2,181	2,484	2,163	2,805	2,441	2,469	2,036	2,430	2,206	27,604	2,300	31.05
Number of Advocacy/Counselling Clients	129	144	187	105	248	238	327	211	198	106	179	190	2,262	189	12%
Meals Provided through Community Kitchen	3,440	3,871	3,505	2,667	3,431	3,170	4,027	3,549	3,476	1,593	3,444	3,606	39,779	3,315	13%
Number of Donors	21	40	45	78	33	36	28	44	30	47	34	20	456	38	
Cash Donations/Funding Received (\$)	\$665	\$4,037	\$12,072	\$32,424	\$8,458	\$9,113	\$825	\$34,381	\$1,408	\$29,208	\$3,217	\$475	\$136,283	\$11,357	\$5
Food Donations Received (\$ Value)	\$55,744	\$78,217	\$72,990	\$83,998	\$62,854	\$79,274	\$68,788	\$64,605	\$64,980	\$50,216	\$84,374	\$81,745	\$847,785	\$70,649	\$28
Value of Food Provided by Client (\$)	\$24	\$32	\$29	\$43	\$25	\$33	\$26	\$23	\$23	\$35	\$27	\$29		\$28	
Other In-Kind Donations Received (\$ Value)	\$1,811	\$4,066	\$3,013	\$1,190	\$1,673	\$1,075	\$2,887	\$3,535	\$2,862	\$2,094	\$2,410	\$2,047	\$28,663	\$2,389	\$1

* FYFB operations were closed for 2 weeks in June 2009 to carry out renovations

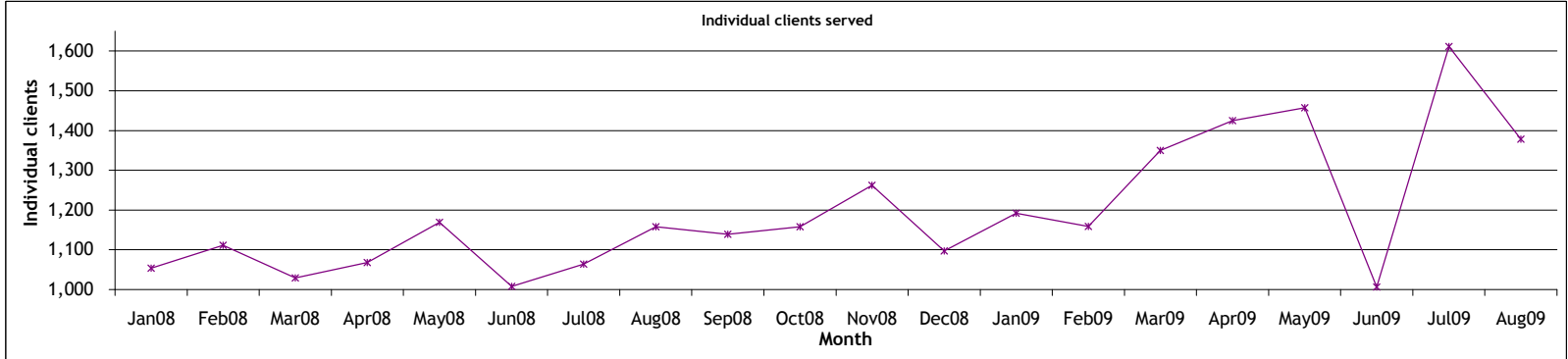
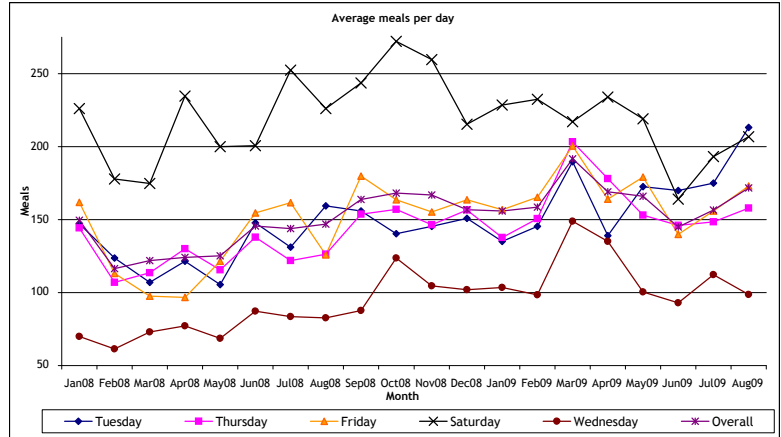
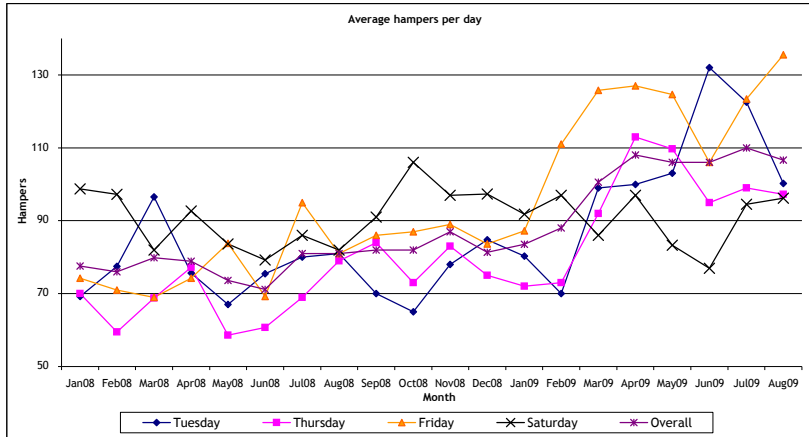


FORT YORK FOOD BANK
Daily operations report
Reporting for: August 2009

DATE	Drop in Centre Meals Served	Food program				Total clients	New clients
		Hampers	Adults	Children			
1/Aug/09	172	78	101	6	107	7	
2/Aug/09							
3/Aug/09							
4/Aug/09	152	99	116	24	140	14	
5/Aug/09	69						
6/Aug/09	167	108	140	24	164	4	
7/Aug/09	204	148	217	50	267	10	
8/Aug/09	243	96	124	18	142	13	
9/Aug/09							
10/Aug/09							
11/Aug/09	249	98	122	30	152	7	
12/Aug/09	139						
13/Aug/09	147	100	126	31	157	15	
14/Aug/09	181	148	211	43	254	5	
15/Aug/09	264	103	127	9	136	2	
16/Aug/09							
17/Aug/09							
18/Aug/09	264	104	123	15	138	6	
19/Aug/09	90						
20/Aug/09	210	105	126	16	142	5	
21/Aug/09	189	157	229	55	284	8	
22/Aug/09	225	112	129	14	143	15	
23/Aug/09							
24/Aug/09							
25/Aug/09	188	100	123	20	143	10	
26/Aug/09	97						
27/Aug/09	108	76	103	20	123	3	
28/Aug/09	118	89	154	36	190	3	
29/Aug/09	130	92	103	9	112	3	
30/Aug/09							
31/Aug/09							
Totals	3,606	1,813	2,374	420	2,794	130	
Individual clients			1,175	203	1,378		
Daily Averages							
Tuesday	213	100	121	22	143	9	
Wednesday	99	n/a	n/a	n/a	n/a	n/a	
Thursday	158	97	124	23	147	7	
Friday	173	136	203	46	249	7	
Saturday	207	96	117	11	128	8	
Overall	172	107	140	25	164	8	

Fort York Food Bank (FYFB)
Food and Meal Program Averages

Average daily hampers	Jan08	Feb08	Mar08	Apr08	May08	Jun08	Jul08	Aug08	Sep08	Oct08	Nov08	Dec08	Jan09	Feb09	Mar09	Apr09	May09	Jun09	Jul09	Aug09	12 month average
Tuesday	69	78	97	76	67	76	80	81	70	65	78	85	80	70	99	100	103	132	123	100	92
Wednesday												28									28
Thursday	70	60	69	77	59	61	69	79	84	73	83	75	72	73	92	113	110	95	99	97	89
Friday	74	71	69	74	84	69	95	81	86	87	89	84	87	111	126	127	125	106	123	136	107
Saturday	99	97	82	93	84	79	86	82	91	106	97	97	92	97	86	97	83	77	95	96	93
Overall	78	76	80	79	74	71	81	81	82	82	87	81	84	88	101	108	106	106	110	107	95
Sequential growth (%)		(2)	5	(1)	(7)	(3)	14	0	1	0	6	(7)	3	5	14	7	(2)	0	4	(3)	32
Average daily meals	Jan08	Feb08	Mar08	Apr08	May08	Jun08	Jul08	Aug08	Sep08	Oct08	Nov08	Dec08	Jan09	Feb09	Mar09	Apr09	May09	Jun09	Jul09	Aug09	12 month average
Tuesday	147	124	107	122	106	148	131	160	156	140	146	151	135	146	190	139	173	170	175	213	161
Wednesday	70	62	73	77	69	87	84	83	88	124	105	102	104	99	149	135	101	93	112	99	109
Thursday	144	107	114	130	116	138	122	126	154	157	147	157	138	151	203	178	153	146	148	158	157
Friday	162	113	98	97	121	155	162	126	180	164	155	164	157	165	201	164	179	140	156	173	166
Saturday	226	178	175	235	200	201	252	226	244	272	260	215	228	233	217	234	219	164	193	207	224
Overall	150	116	122	124	125	146	144	147	164	168	167	157	156	159	192	169	166	145	157	172	164
Sequential growth (%)		(22)	5	2	1	16	(1)	2	11	3	(1)	(6)	(1)	2	21	(12)	(2)	(13)	8	10	17
Individual clients served	Jan08	Feb08	Mar08	Apr08	May08	Jun08	Jul08	Aug08	Sep08	Oct08	Nov08	Dec08	Jan09	Feb09	Mar09	Apr09	May09	Jun09	Jul09	Aug09	12 month average
	1,054	1,111	1,029	1,068	1,169	1,008	1,064	1,158	1,139	1,158	1,262	1,097	1,192	1,159	1,350	1,425	1,457	1,006	1,611	1,378	1,270
Sequential growth (%)		5	(7)	4	9	(14)	6	9	(2)	2	9	(13)	9	(3)	16	6	2	(31)	60	(14)	19



Fort York Food Bank (FYFB)

Advocacy/Counselling Operations Report

Twelve Months ending August 31, 2009	2008												2009		Past 12 months	
	Sept	Oct	Nov	Dec	Jan	Feb	March	April	May	June	July	Aug	Total	Average		
Outreach Meetings	0	3	4	2	4	3	4	2	2	0	1	0	25	2		
Referrals to Partners	19	11	12	10	16	23	12	43	28	17	18	14	223	19		
Community Partners	13	15	15	15	15	16	15	15	15	15	15	15	179	15		
Community Partner Retention	100%	100%	100%	100%	100%	100%	94%	100%	100%	100%	100%	100%	-	99%		
Counselling Service Users	129	144	187	105	248	238	327	211	198	106	179	190	2,262	189		
3rd Party Intervention - Meetings	6	2	4	2	10	5	23	11	9	2	3	2	79	7		
3rd Party Intervention - Letters/Applications	14	7	10	7	10	17	13	23	16	16	11	10	154	13		
Cross-Cultural Language Services	39	42	38	34	47	58	40	41	35	18	59	61	512	43		
Languages Supported	6	6	6	6	6	6	6	6	6	6	6	6	72	6		
Workshop Partners	8	9	9	9	9	9	9	9	9	9	9	9	107	9		
Workshops Delivered	3	2	4	4	1	7	7	8	5	1	1	1	44	4		
Workshop Attendance	45	11	24	36	10	57	120	97	33	6	7	7	453	38		
Counsellors	10	10	12	13	12	13	13	12	10	9	10	9	133	11		
Counsellor Retention	100%	100%	100%	100%	92%	100%	100%	92%	83%	90%	100%	90%	-	96%		
Senior Volunteers	9	10	9	9	9	9	9	9	10	10	11	11	115	10		
Senior Volunteer Hours	489	567	508	470	503	462	538	543	615	775	686	525	6,681	557		
New General Volunteers - Trained	2	4	5	2	5	8	9	6	7	7	4	5	64	5		
Volunteer Hours	442	495	562	364	395	427	472	460	538	584	671	539	5,949	496		

Case BreakDown

Housing	8	12	11	6	17	15	12	9	6	1	5	6	11%
Legal clinic/ID	10	6	8	3	5	3	8	3	5	2	3	4	6%
OW/ODSP/EI	22	44	47	23	15	22	37	45	23	24	52	49	41%
Training/Employment	5	3	4	0	4	6	11	3	5	1	3	4	5%
Financial (Tax Returns, CTB, etc.)	3	2	2	1	2	5	8	6	4	0	1	1	4%
Health	7	6	7	5	13	14	14	7	8	4	10	8	11%
Immigration	1	2	4	1	0	5	3	5	5	1	0	4	3%
Other	10	14	16	4	38	34	23	9	14	5	7	10	19%