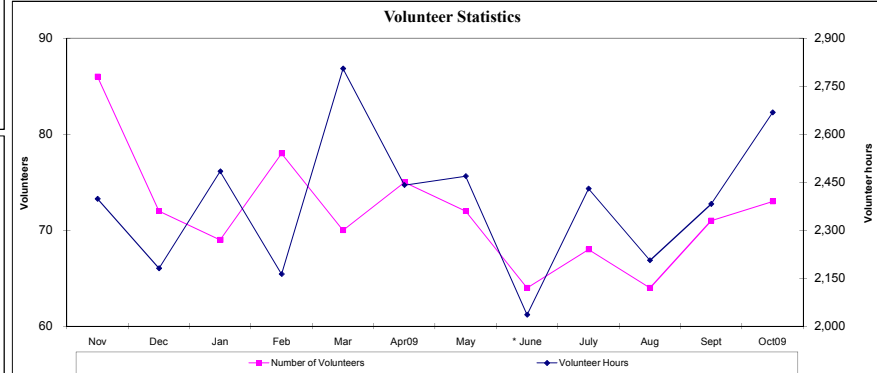
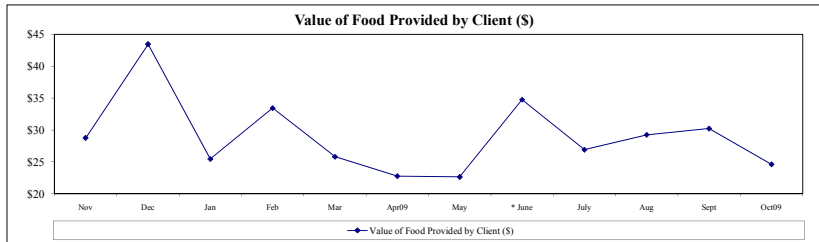
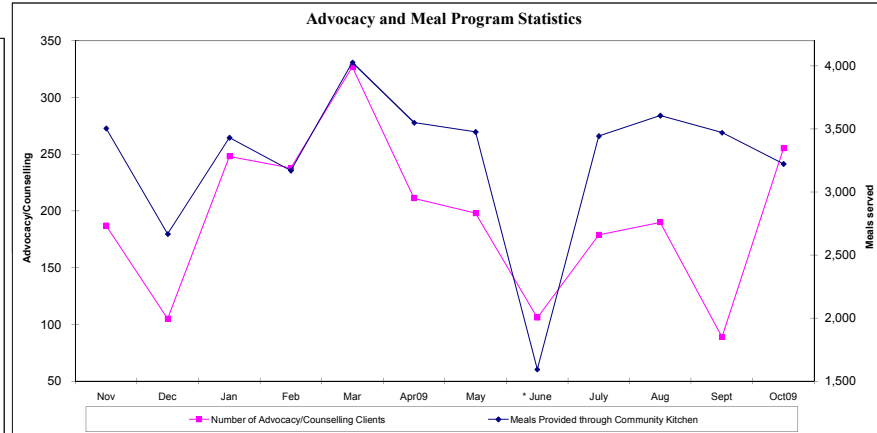
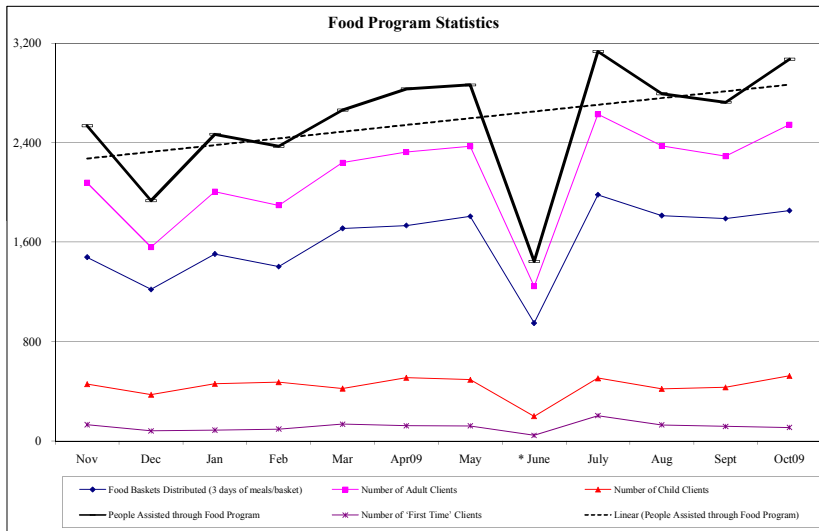


## Fort York Food Bank Monthly Performance Report (FYFB)

Twelve Months ending October 31, 2009	2008		2009										12 Month Rolling Figures		
	Nov	Dec	Jan	Feb	Mar	Apr09	May	* June	July	Aug	Sept	Oct09	Current Total	Current Average	Ratios
Food Baskets Distributed (3 days of meals/basket)	1,479	1,220	1,504	1,403	1,710	1,733	1,807	950	1,980	1,813	1,789	1,853	19,241	1,603	
Meals Provided through Food Program	22,833	17,406	22,212	21,339	23,967	25,506	25,785	13,005	28,206	25,146	24,525	27,639	277,569	23,131	14.43
Number of Adult Clients	2,079	1,560	2,007	1,896	2,240	2,324	2,371	1,245	2,628	2,374	2,292	2,546	25,562	2,130	83%
Number of Child Clients	458	374	461	475	423	510	494	200	506	420	433	525	5,279	440	17%
People Assisted through Food Program	2,537	1,934	2,468	2,371	2,663	2,834	2,865	1,445	3,134	2,794	2,725	3,071	30,841	2,570	100%
Number of 'First Time' Clients	131	82	88	96	136	123	122	46	204	130	118	109	1,385	115	4%
Number of Volunteers	86	72	69	78	70	75	72	64	68	64	71	73	862	72	
Volunteer Hours	2,398	2,181	2,484	2,163	2,805	2,441	2,469	2,036	2,430	2,206	2,382	2,668	28,663	2,389	33.25
Number of Advocacy/Counselling Clients	187	105	248	238	327	211	198	106	179	190	89	255	2,333	194	12%
Meals Provided through Community Kitchen	3,505	2,667	3,431	3,170	4,027	3,549	3,476	1,593	3,444	3,606	3,470	3,223	39,161	3,263	12%
Number of Donors	45	78	33	36	28	44	30	47	34	20	39	63	497	41	
Cash Donations/Funding Received (\$)	\$12,072	\$32,424	\$8,458	\$9,113	\$825	\$34,381	\$1,408	\$29,208	\$3,217	\$475	\$17,617	\$8,741	\$157,939	\$13,162	\$5
Food Donations Received (\$ Value)	\$72,990	\$83,998	\$62,854	\$79,274	\$68,788	\$64,605	\$64,980	\$50,216	\$84,374	\$81,745	\$82,407	\$75,689	\$871,920	\$72,660	\$28
Value of Food Provided by Client (\$)	\$29	\$43	\$25	\$33	\$26	\$23	\$23	\$35	\$27	\$29	\$30	\$25		\$28	
Other In-Kind Donations Received (\$ Value)	\$3,013	\$1,190	\$1,673	\$1,075	\$2,887	\$3,535	\$2,862	\$2,094	\$2,410	\$2,047	\$4,342	\$9,025	\$36,153	\$3,013	\$1

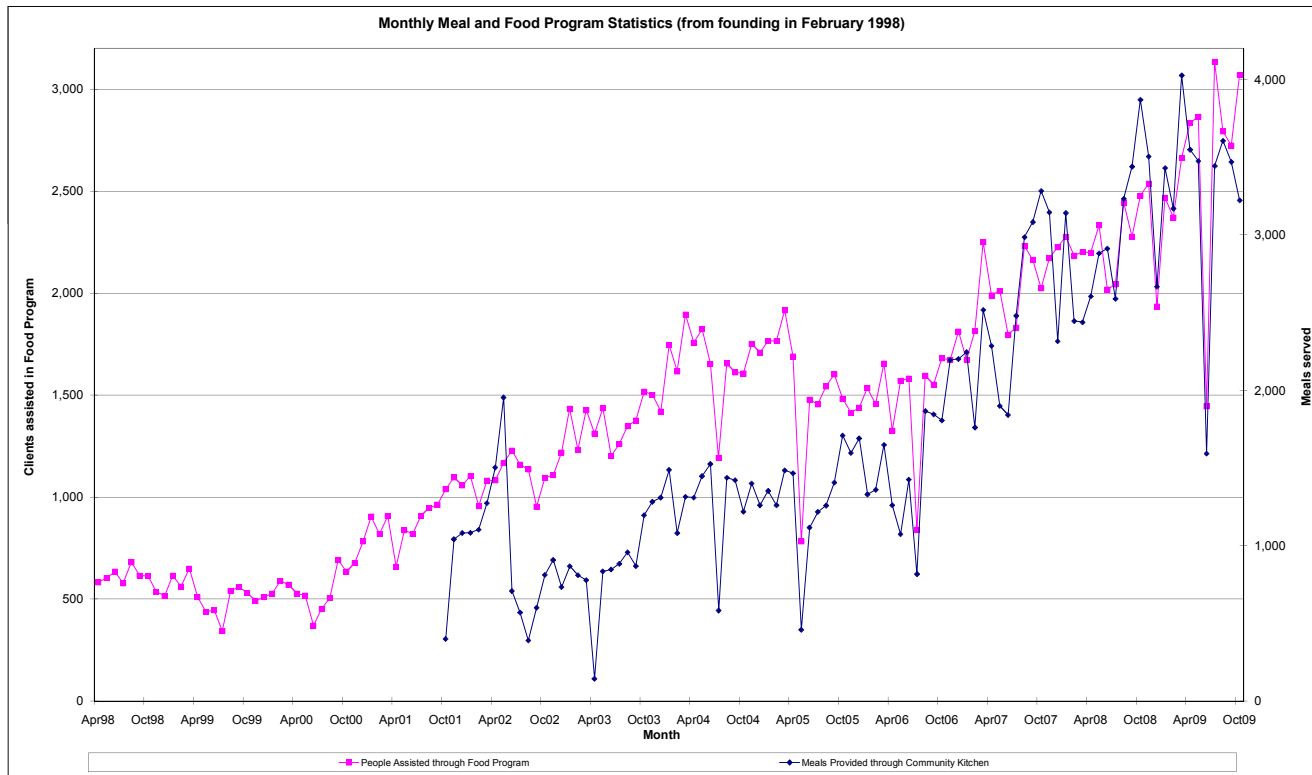
\* FYFB operations were closed for 2 weeks in June 2009 to carry out renovations



## Fort York Food Bank Monthly Performance Report (FYFB)

Twelve Months ending October 31, 2009	Current Month				Trailing 12 months				From Founding
	2007	2008	* 2009	% change	2007	2008	* 2009	% change	
Food Baskets Distributed (3 days of meals/basket)	1,149	1,482	1,853	61	13,267	15,626	19,241	45	110,872
Meals Provided through Food Program	18,216	22,302	27,639	52	209,412	239,793	277,569	33	1,751,253
Number of Adult Clients	1,646	2,048	2,546	55	18,260	22,064	25,562	40	149,126
Number of Child Clients	378	430	525	39	5,008	4,789	5,279	5	44,049
People Assisted through Food Program	2,024	2,478	3,071	52	23,268	26,853	30,841	33	193,175
Number of 'First Time' Clients	80	109	109	36	1,451	1,375	1,385	(5)	15,260
Number of Volunteers	48	89	73	52	622	627	862	39	5,433
Volunteer Hours	1,328	2,148	2,668	101	17,825	22,349	28,663	61	154,749
Number of Advocacy/Counselling Clients	101	144	255	152	1,356	1,022	2,333	72	15,418
Meals Provided through Community Kitchen	3,284	3,871	3,223	(2)	28,784	35,021	39,161	36	173,859
Number of Donors	40	40	63	58	394	370	497	26	2,740
Cash Donations/Funding Received (\$)	\$6,978	\$4,037	\$8,741	25	\$116,657	\$91,800	\$157,939	35	\$1,098,162
Food Donations Received (\$ Value)	\$68,023	\$78,217	\$75,689	11	\$636,236	\$727,459	\$871,920	37	\$4,672,759
Value of Food Provided by Client (\$)	\$34	\$32	\$25	(27)	\$27	\$27	\$28	3	\$24
Other In-Kind Donations Received (\$ Value)	\$1,841	\$4,066	\$9,025	390	\$35,908	\$36,828	\$36,153	1	\$290,197

\* FYFB operations were closed for 2 weeks in June 2009 to carry out renovations



**FORT YORK FOOD BANK**

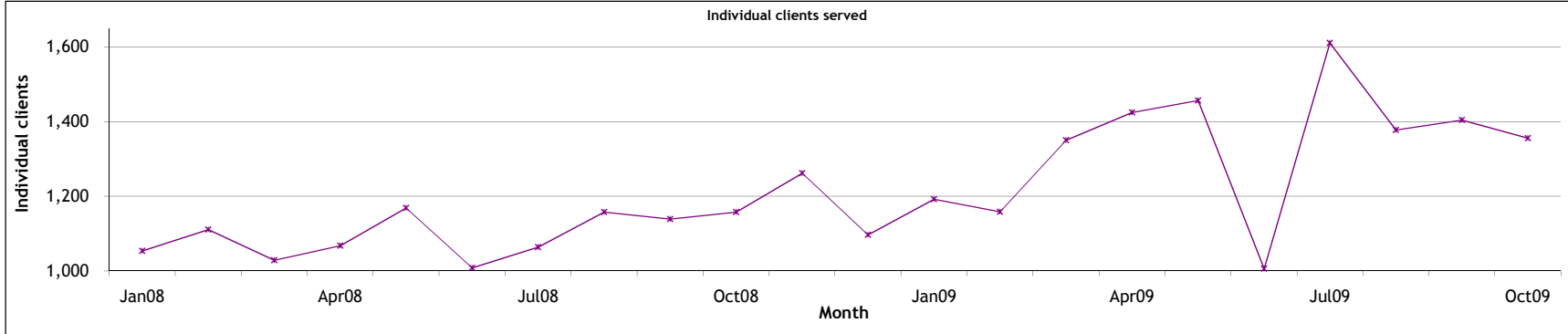
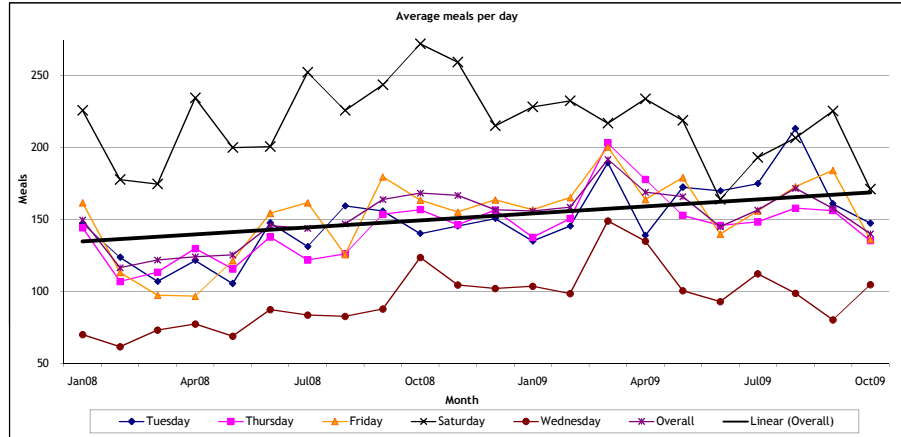
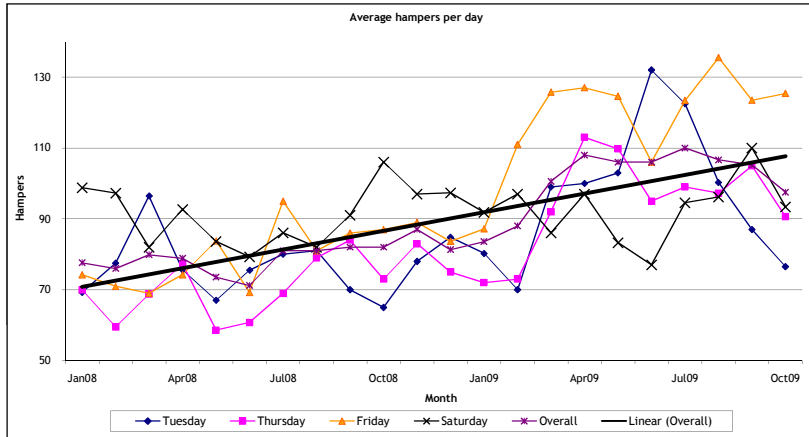
**Daily operations report**

**Reporting for: October 2009**

DATE	Drop in Centre Meals Served	Food program				Total clients	New clients
		Hampers	Adults	Children			
1/Oct/09	98	72	104	33	137	5	
2/Oct/09	125	136	208	44	252	7	
3/Oct/09	175	100	132	26	158	16	
4/Oct/09							
5/Oct/09							
6/Oct/09	120	73	88	15	103	5	
7/Oct/09	109						
8/Oct/09	154	97	148	34	182	6	
9/Oct/09	145	125	192	44	236	2	
10/Oct/09	219	82	104	32	136	12	
11/Oct/09							
12/Oct/09							
13/Oct/09	175	70	84	13	97	2	
14/Oct/09	97						
15/Oct/09	124	109	148	41	189	3	
16/Oct/09	174	119	178	26	204	9	
17/Oct/09	162	104	125	9	134	5	
18/Oct/09							
19/Oct/09							
20/Oct/09	175	94	117	15	132	4	
21/Oct/09	127						
22/Oct/09	151	100	141	41	182	5	
23/Oct/09	151	145	210	47	257	7	
24/Oct/09	205	111	129	14	143	11	
25/Oct/09							
26/Oct/09							
27/Oct/09	120	69	86	12	98	1	
28/Oct/09	86						
29/Oct/09	150	75	106	31	137	5	
30/Oct/09	86	102	160	33	193	3	
31/Oct/09	95	70	86	15	101	1	
<b>Totals</b>	<b>3,223</b>	<b>1,853</b>	<b>2,546</b>	<b>525</b>	<b>3,071</b>	<b>109</b>	
<b>Individual clients</b>			<b>1,133</b>	<b>223</b>	<b>1,356</b>		
<b>Daily Averages</b>							
Tuesday	148	77	94	14	108	3	
Wednesday	105	n/a	n/a	n/a	n/a	n/a	
Thursday	135	91	129	36	165	5	
Friday	136	125	190	39	228	6	
Saturday	171	93	115	19	134	9	
<b>Overall</b>	<b>140</b>	<b>98</b>	<b>134</b>	<b>28</b>	<b>162</b>	<b>6</b>	

**Fort York Food Bank (FYFB)**  
**Food and Meal Program Averages**

Average daily hampers	Jan08	Feb08	Mar08	Apr08	May08	Jun08	Jul08	Aug08	Sep08	Oct08	Nov08	Dec08	Jan09	Feb09	Mar09	Apr09	May09	Jun09	Jul09	Aug09	Sep09	Oct09	12 month average
Tuesday	69	78	97	76	67	76	80	81	70	65	78	85	80	70	99	100	103	132	123	100	87	77	94
Wednesday											28												28
Thursday	70	60	69	77	59	61	69	79	84	73	83	75	72	73	92	113	110	95	99	97	105	91	92
Friday	74	71	69	74	84	69	95	81	86	87	89	84	87	111	126	127	125	106	123	136	124	125	114
Saturday	99	97	82	93	84	79	86	82	91	106	97	97	92	97	86	97	83	77	95	96	110	93	93
<b>Overall</b>	<b>78</b>	<b>76</b>	<b>80</b>	<b>79</b>	<b>74</b>	<b>71</b>	<b>81</b>	<b>81</b>	<b>82</b>	<b>82</b>	<b>87</b>	<b>81</b>	<b>84</b>	<b>88</b>	<b>101</b>	<b>108</b>	<b>106</b>	<b>106</b>	<b>110</b>	<b>107</b>	<b>105</b>	<b>98</b>	<b>98</b>
<b>Sequential growth (%)</b>		(2)	5	(1)	(7)	(3)	14	0	1	0	6	(7)	3	5	14	7	(2)	0	4	(3)	(1)	(7)	<b>19</b>
Average daily meals	Jan08	Feb08	Mar08	Apr08	May08	Jun08	Jul08	Aug08	Sep08	Oct08	Nov08	Dec08	Jan09	Feb09	Mar09	Apr09	May09	Jun09	Jul09	Aug09	Sep09	Oct09	12 month average
Tuesday	147	124	107	122	106	148	131	160	156	140	146	151	135	146	190	139	173	170	175	213	161	148	162
Wednesday	70	62	73	77	69	87	84	83	88	124	105	102	104	99	149	135	101	93	112	99	80	105	107
Thursday	144	107	114	130	116	138	122	126	154	157	147	157	138	151	203	178	153	146	148	158	156	135	156
Friday	162	113	98	97	121	155	162	126	180	164	155	164	157	165	201	164	179	140	156	173	184	136	165
Saturday	226	178	175	235	200	201	252	226	244	272	260	215	228	233	217	234	219	164	193	207	226	171	214
<b>Overall</b>	<b>150</b>	<b>116</b>	<b>122</b>	<b>124</b>	<b>125</b>	<b>146</b>	<b>144</b>	<b>147</b>	<b>164</b>	<b>168</b>	<b>167</b>	<b>157</b>	<b>156</b>	<b>159</b>	<b>192</b>	<b>169</b>	<b>166</b>	<b>145</b>	<b>157</b>	<b>172</b>	<b>158</b>	<b>140</b>	<b>161</b>
<b>Sequential growth (%)</b>		(22)	5	2	1	16	(1)	2	11	3	(1)	(6)	(1)	2	21	(12)	(2)	(13)	8	10	(8)	(11)	<b>(17)</b>
Individual clients served	Jan08	Feb08	Mar08	Apr08	May08	Jun08	Jul08	Aug08	Sep08	Oct08	Nov08	Dec08	Jan09	Feb09	Mar09	Apr09	May09	Jun09	Jul09	Aug09	Sep09	Oct09	12 month average
	1,054	1,111	1,029	1,068	1,169	1,008	1,064	1,158	1,139	1,158	1,262	1,097	1,192	1,159	1,350	1,425	1,457	1,006	1,611	1,378	1,404	1,356	1,308
<b>Sequential growth (%)</b>		5	(7)	4	9	(14)	6	9	(2)	2	9	(13)	9	(3)	16	6	2	(31)	60	(14)	2	(3)	<b>17</b>



# Fort York Food Bank (FYFB)

## Advocacy/Counselling Operations Report

Twelve Months ending October 31, 2009	2008												2009		Past 12 months	
	Nov	Dec	Jan	Feb	March	April	May	June	July	Aug	Sept	Oct	Total	Average		
Outreach Meetings	4	2	4	3	4	2	2	0	1	0	0	2	24	2		
Referrals to Partners	12	10	16	23	12	43	28	17	18	14	15	20	228	19		
Community Partners	15	15	15	16	15	15	15	15	15	15	15	15	181	15		
Community Partner Retention	100%	100%	100%	100%	94%	100%	100%	100%	100%	100%	100%	100%	-	99%		
Counselling Service Users	187	105	248	238	327	211	198	106	179	190	89	255	2,333	194		
3rd Party Intervention - Meetings	4	2	10	5	23	11	9	2	3	2	2	9	82	7		
3rd Party Intervention - Letters/Applications	10	7	10	17	13	23	16	16	11	10	11	10	154	13		
Cross-Cultural Language Services	38	34	47	58	40	41	35	18	59	61	33	32	496	41		
Languages Supported	6	6	6	6	6	6	6	6	6	6	6	5	71	6		
Workshop Partners	9	9	9	9	9	9	9	9	9	9	9	9	108	9		
Workshops Delivered	4	4	1	7	7	8	5	1	1	1	5	5	49	4		
Workshop Attendance	24	36	10	57	120	97	33	6	7	7	32	56	485	40		
Counsellors	12	13	12	13	13	12	10	9	10	9	10	9	132	11		
Counsellor Retention	100%	100%	92%	100%	100%	92%	83%	90%	100%	100%	100%	90%	-	96%		
Senior Volunteers	9	9	9	9	9	9	10	10	11	11	11	11	118	10		
Senior Volunteer Hours	508	470	503	462	538	543	615	775	686	525	547	665	6,837	570		
New General Volunteers - Trained	5	2	5	8	9	6	7	7	4	5	6	7	71	6		
Volunteer Hours	562	364	395	427	472	460	538	584	671	539	444	588	6,044	504		

### Case BreakDown

Housing	11	6	17	15	12	9	6	1	5	6	5	11	11%
Legal clinic/ID	8	3	5	3	8	3	5	2	3	4	2	4	5%
OW/ODSP/EI	47	23	15	22	37	45	23	24	52	49	18	42	42%
Training/Employment	4	0	4	6	11	3	5	1	3	4	6	15	7%
Financial (Tax Returns, CTB, etc.)	2	1	2	5	8	6	4	0	1	1	0	1	3%
Health	7	5	13	14	14	7	8	4	10	8	5	14	11%
Immigration	4	1	0	5	3	5	5	1	0	4	0	2	3%
Other	16	4	38	34	23	9	14	5	7	10	2	4	17%