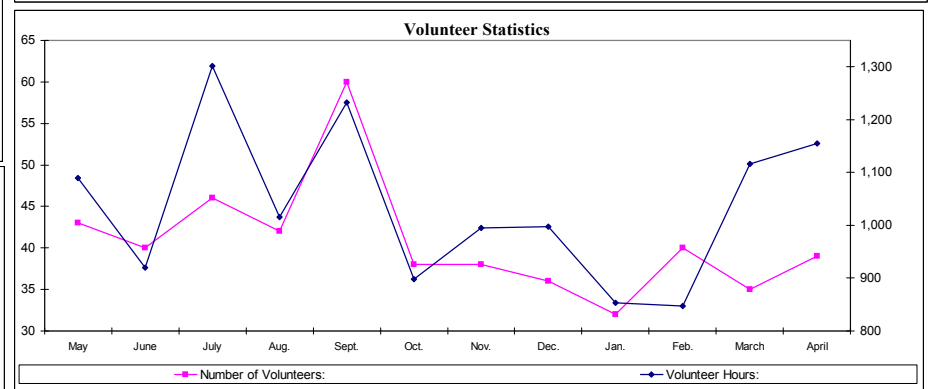
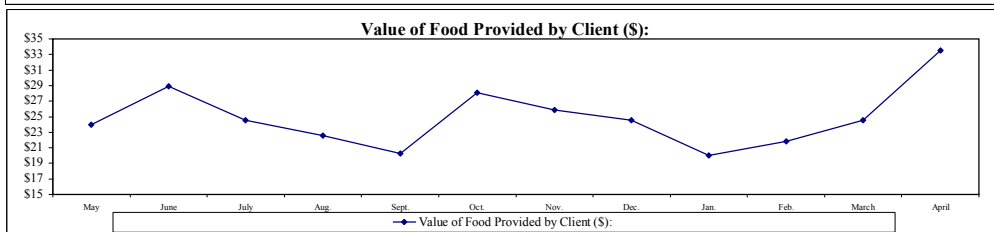
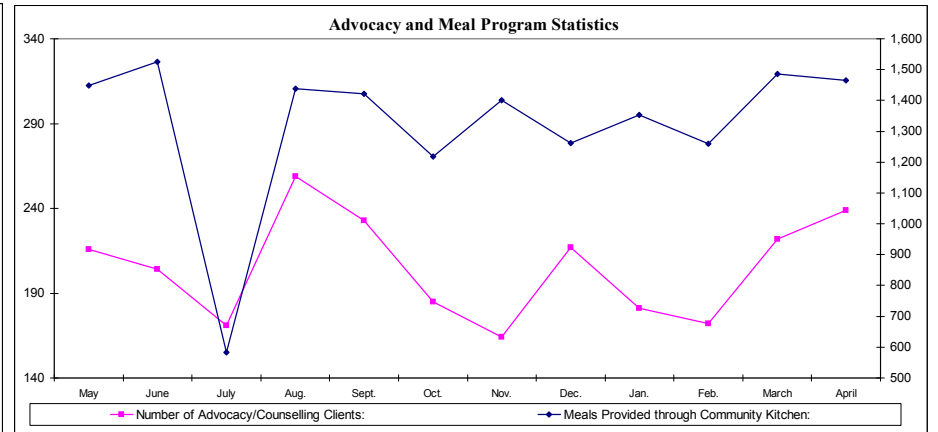
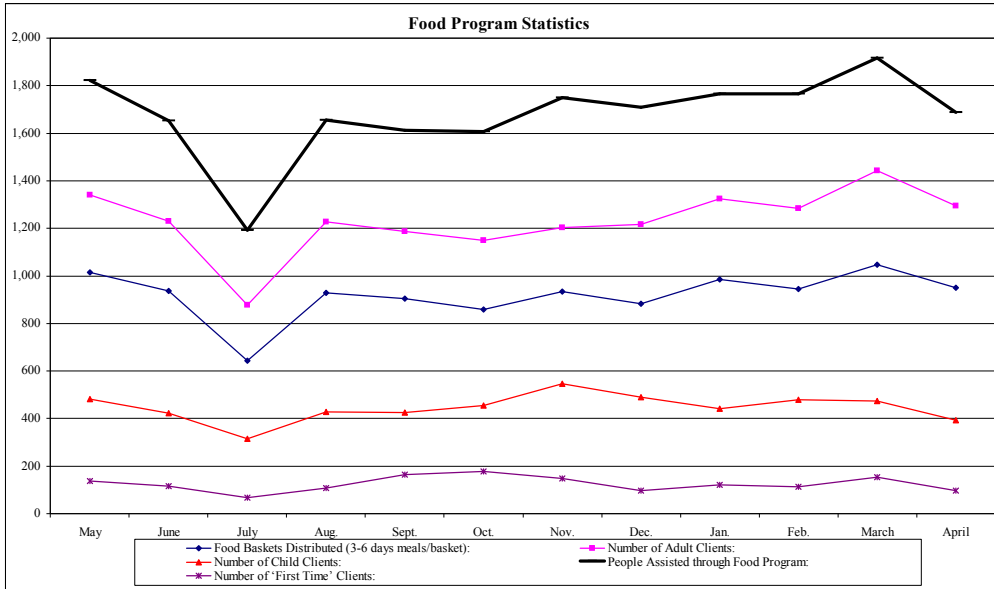


Fort York Food Bank Performance Report (FYFB)

Twelve Months ending April 30th, 2005	2004								2005				12 Month Rolling Figures				
	May	June	July	Aug.	Sept.	Oct.	Nov.	Dec.	Jan.	Feb.	March	April	Current Total	Current Avg.	Ratios	Prior 12	% Change
Food Baskets Distributed (3-6 days meals/basket):	1,014	936	642	930	904	860	935	883	984	945	1,047	949	11,029	919		9,845	12%
Meals Provided through Food Program:	16,929	15,714	11,592	15,930	15,291	15,480	16,119	15,615	16,092	16,245	17,595	15,660	188,262	15,689	17.07	166,113	13%
Number of Adult Clients:	1,341	1,230	878	1,227	1,188	1,150	1,204	1,217	1,324	1,285	1,442	1,295	14,781	1,232	73%	12,929	14%
Number of Child Clients:	482	423	314	429	424	456	547	491	441	480	474	394	5,355	446	27%	5,144	4%
People Assisted through Food Program:	1,823	1,653	1,192	1,656	1,612	1,606	1,751	1,708	1,765	1,765	1,916	1,689	20,136	1,678	100%	18,073	11%
Number of 'First Time' Clients:	137	116	68	107	164	178	148	96	122	114	154	96	1,500	125	7%	1,596	-6%
Number of Volunteers:	43	40	46	42	60	38	38	36	32	40	35	39	489	41		610	-20%
Volunteer Hours:	1,089	921	1,301	1,016	1,233	898	995	998	853	847	1,116	1,155	12,422	1,035	25.40	12,370	0%
Number of Advocacy/Counselling Clients:	216	204	171	259	233	185	164	217	181	172	222	239	2,463	205	22%	2,241	10%
Meals Provided through Community Kitchen:	1,448	1,526	583	1,438	1,422	1,219	1,401	1,261	1,353	1,260	1,485	1,466	15,862	1,322	8%	13,374	19%
Number of Donors:	30	69	20	29	49	41	27	33	17	22	30	25	392	33			
Cash Donations/Funding Received (\$):	\$38,030	\$6,295	\$715	\$24,874	\$5,546	\$1,380	\$12,758	\$2,587	\$1,541	\$2,505	\$27,871	\$4,799	\$128,900	\$10,742	\$6	\$146,512	-12%
Food Donations Received (\$ Value):	\$43,648	\$47,759	\$29,290	\$37,411	\$32,696	\$45,166	\$45,238	\$41,958	\$35,354	\$38,520	\$47,096	\$56,653	\$500,788	\$41,732	\$25	\$466,721	7%
Value of Food Provided by Client (\$):	\$24	\$29	\$25	\$23	\$20	\$28	\$26	\$25	\$20	\$22	\$25	\$34		\$25		\$26	-4%
Other In-Kind Donations Received (\$ Value):	\$3,431	\$2,211	\$2,169	\$1,003	\$3,789	\$8,247	\$1,902	\$5,118	\$1,261	\$1,690	\$2,743	\$1,854	\$35,418	\$2,951	\$2	\$25,484	39%



Fort York Food Bank (FYFB)

Advocacy/ Counselling Operations Report

12 months ending April 30th, 2005	2004								2005				Total	12 Mth. Avg.	Mnthly Target
	May	June	July	Aug	Sept	Oct	Nov	Dec	Jan	Feb	March	April			
Outreach Meetings	10	7	8	9	10	4	3	4	5	6	8	11	85	7	4
Referrals to Partners	5	7	15	10	9	15	15	23	11	9	8	9	136	11	10
Community Partners	12	12	12	13	13	15	15	15	15	15	15	15	167	14	10
Community Partner Retention	100%	100%	100%	100%	100%	100%	100%	100%	100%	100%	100%	100%	100%	-	80%
Counselling Service Users	216	204	171	259	233	185	164	217	181	172	222	239	2,463	205	100
3rd Party Intervention - Meetings	23	28	14	24	26	35	17	27	35	27	27	21	304	25	15
3rd Party Intervention - Letters/Applications	28	23	19	21	22	16	16	12	13	18	15	17	220	18	5
Cross-Cultural Language Services	38	15	19	24	15	19	12	16	13	15	11	21	218	18	N/A
Languages Supported	5	5	5	5	5	6	6	6	5	5	6	5	64	5	5
Employment Assistance	52	73	82	76	116	53	43	38	42	49	47	71	742	62	15
Employment Placements	0	2	1	1	1	2	1	2	2	2	3	2	19	2	10
Employment Retention	100%	100%	100%	100%	100%	100%	100%	100%	100%	100%	100%	100%	100%	-	80%
Workshop Partners	5	5	5	6	9	9	9	9	9	9	9	9	93	8	4
Workshops Delivered	10	10	10	5	12	4	4	3	3	3	3	4	71	6	1
Workshop Attendance	69	57	67	25	77	20	12	11	10	9	8	16	381	32	10
Counsellors	4	4	5	5	5	6	6	6	6	7	10	11	75	6	2
General Volunteers - Trained	6	8	8	10	14	14	14	13	10	10	14	16	137	11	10
New General Volunteers - Trained	1	1	0	3	1	1	2	1	0	1	3	6	20	2	3
General Volunteer Retention	100%	100%	100%	88%	70%	93%	93%	93%	77%	90%	70%	93%	89%	-	80%
Volunteer Hours	300	247	310	225	396	216	367	235	158	165	488	348	3,455	288	200

Case BreakDown	May	June	July	Aug	Sept	Oct	Nov	Dec	Jan	Feb	March	April	Total	12 Mth. Avg.	Mnthly Target
Housing	35	42	27	44	40	47	49	27	29	31	43	34	14%		
Legal clinic/ID	13	23	21	21	18	11	24	28	16	12	26	9	7%		
OW/ODSP/EI	82	56	77	94	89	84	67	71	69	99	96	98	30%		
OW						67	46	51	59	81	67	87	n/a		
ODSP						9	14	16	8	14	22	8	n/a		
EI						8	7	4	2	4	7	3	n/a		
Training/Employment	52	61	40	35	47	53	43	38	42	49	47	71	18%		
Financial (Tax Returns, CTB, etc.)	13	7	12	13	3	1	7	23	15	19	37	18	5%		
Health	11	6	8	6	9	12	13	15	14	11	8	24	4%		
Immigration	7	2	0	6	5	3	6	20	6	7	5	3	2%		
Other	12	15	5	11	6	10	9	10	13	7	4	10	3%		